

## Contents

Section 13	City of Los Altos Annex .....	13-3
13.1	Introduction.....	13-3
13.2	Internal Planning Process .....	13-7
13.3	Capability Assessment.....	13-14
13.3.1	Mitigation Progress .....	13-14
13.3.2	Staff and Organizational Capabilities .....	13-16
13.3.3	National Flood Insurance Program .....	13-27
13.3.4	Resource List: .....	13-29
13.4	Vulnerability Assessment .....	13-29
13.4.1	Critical Facilities .....	13-29
13.4.2	Exposure Analysis.....	13-30
13.5	Mitigation Strategy .....	13-49
13.5.1	Primary Concerns.....	13-49
13.5.2	Mitigation Actions .....	13-49
13.6	Plan Maintenance.....	13-53
13.6.1	Monitoring, evaluating, updating the plan .....	13-53
13.6.2	Point of Contact .....	13-53
13.7	City of Los Altos Appendix.....	13-54
13.7.1	Los Altos Attachment 1: Outreach Materials.....	13-54
13.7.2	Los Altos Attachment 2: Los Altos Strategies 2010.....	13-56
13.7.3	Los Altos Attachment 3: Los Altos Exposure Analysis.....	13-58
	Figure 13-1: Inventory of Soft-First Story Multi-Family Dwellings-City of Los Altos.....	13-39
	Table 13-1: Hazards of Most Concern.....	13-8
	Table 13-2: Items Readily Available to Respondents.....	13-9
	Table 13-3: Adequate Homeowners Insurance.....	13-11
	Table 13-4: Earthquake Insurance .....	13-11
	Table 13-5: Flood Insurance .....	13-11
	Table 13-6: Property Changes to Reduce Future Damage from Hazards.....	13-12
	Table 13-7: Place of Work in Hazard Areas .....	13-12
	Table 13-8: Key Departments in the City of Los Altos .....	13-16

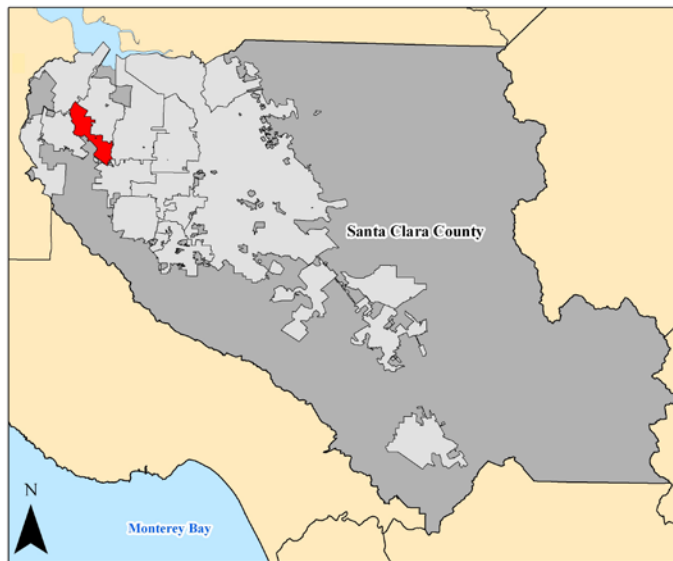
Table 13-9: Technical Capability Matrix.....13-18  
Table 13-10: Fiscal Capability Matrix .....13-19  
Table 13-11: Financing Mechanisms .....13-20  
Table 13-12: Summary of Ordinances that Support Hazard Mitigation .....13-25  
Table 13-13: City of Los Altos Critical Facilities.....13-29

## SECTION 13 CITY OF LOS ALTOS ANNEX

### 13.1 INTRODUCTION

This City of Los Altos Annex serves as an annex to the Santa Clara County Local Hazard Mitigation Plan which is an annex to the 2010 Association of Bay Area Local Hazard Mitigation Plan, *Taming Natural Disasters*. Pursuant to the Disaster Mitigation Act of 2000, a signed adoption resolution confirms the City Council adopted this annex.

The City of Los Altos has not previously prepared a local hazard mitigation plan pursuant to the Disaster Mitigation Act of 2000, therefore this is not an update, and should be reviewed as a new plan.



The City of Los Altos is a small city located in the northwestern region of Santa Clara County, California. The City has a population of 28,976 people, based on the 2010 census. Los Altos strives to maintain a semi-rural atmosphere with a minimum lot size for most residential housing at one-quarter of an acre. The civic center sits in the middle of an orchard, a remnant of those that once covered the area. Many Los Altos homes draw a price of \$2 million and higher, putting the city (along with neighboring Los Altos Hills, with which it shares ZIP codes) at numbers 24 and 28 on Forbes'

"Most Expensive ZIP Codes in America" list in 2007.

Los Altos is near the San Andreas Fault and subject to earthquakes.

- 1906 San Francisco Earthquake - Although Los Altos was hit extremely hard (VIII on the intensity level), the main local effort was to help rebuild nearby Santa Cruz, which was nearly destroyed.
- 1989 — On October 17, Los Altos experienced the Loma Prieta earthquake, but avoided major damage. Los Altos and its churches combined efforts to clean up hard-hit areas such as Watsonville and Santa Cruz.

*This page intentionally left blank.*

RESOLUTION NO. 2012-11

A RESOLUTION OF THE CITY COUNCIL OF THE CITY OF LOS ALTOS APPROVING THE CITY OF LOS ALTOS ANNEX TO THE SANTA CLARA COUNTY ANNEX TO THE ASSOCIATION OF BAY AREA GOVERNMENTS LOCAL HAZARD MITIGATION PLAN "TAMING NATURAL DISASTERS"

WHEREAS, the Bay Area is subject to various earthquake-related hazards such as ground shaking, liquefaction, land sliding, fault surface rupture and tsunamis; and

WHEREAS, the Bay Area is subject to various weather-related hazards including wildfires, floods and landslides; and

WHEREAS, the City of Los Altos knows that disasters do not recognize city, county, or special district boundaries; and

WHEREAS, the City of Los Altos seeks to maintain and enhance both a disaster-resistant city and region by reducing the potential loss of life, property damage and environmental degradation from natural disasters, while accelerating economic recovery from the disasters; and

WHEREAS, the City of Los Altos is committed to increasing the disaster resistance of infrastructure, health, housing, economy, government services, education, environment and land use systems in the city, as well as in the Bay Area as a whole; and

WHEREAS, the Federal Disaster Mitigation Act of 2000 requires all cities, counties and special districts to have adopted a Local Hazard Mitigation Plan to receive disaster mitigation funding; and

WHEREAS, the Association of Bay Area Governments has approved and adopted the report, "Taming Natural Disasters," as the multi-jurisdictional Local Hazard Mitigation Plan for the San Francisco Bay Area.

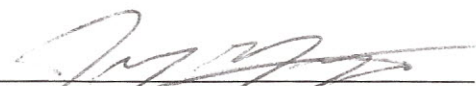
NOW THEREFORE, BE IT RESOLVED, that the City Council of the City of Los Altos hereby adopts, with its local Annex, this multi-jurisdictional plan as its Local Hazard Mitigation Plan.

I HEREBY CERTIFY that the foregoing is a true and correct copy of a Resolution passed and adopted by the City Council of the City of Los Altos at a meeting thereof on the 22<sup>nd</sup> day of May, 2012 by the following vote:

AYES: CASAS, FISHPAW, PACKARD, SATTERLEE, CARPENTER  
NOES: NONE  
ABSENT: NONE  
ABSTAIN: NONE

  
Valorie Cook Carpenter, MAYOR

Attest:

  
Jon Maginot, DEPUTY CITY CLERK

CERTIFIED AS A TRUE COPY

  
City Clerk, City of Los Altos, CA

*This page intentionally left blank.*

## **13.2 INTERNAL PLANNING PROCESS**

The City of Los Altos participated in the regional planning process coordinated by ABAG and the local planning process coordinated by Santa Clara County OES, as noted in Section 3 of this plan. Matthew Hartley, Sergeant, served as the City's representative and lead for completing this annex. Andy Galea, Captain, participated in Local Planning Team meetings #1 and #2, and assisted Mr. Hartley in facilitating the City's public outreach for the online survey, performing internal reviews and collaborating in order to provide all of the required information for development of this annex. Matt Hartley participated in Local Planning Team meeting #3, coordinated internal reviews of the draft annex, distribution of the review draft, and adoption of the conditionally approved annex.

Contact information: Sergeant Paul Arguelles, [parguelles@losaltosca.gov](mailto:parguelles@losaltosca.gov), 650-947-2663

The City of Los Altos' internal planning team included the following individuals:

- Tuck Younis, Chief of Police
- Andy Galea, Police Captain
- Matthew W. Hartley, Police Sergeant
- Paul Arguelles, Police Sergeant
- Brian J. McCarthy, Maintenance Services Manager
- David Kornfield, Planning Services Manager
- Kirk Ballard, Building Official

### ***Public Outreach***

The City of Los Altos notified residents and businesses of the hazard mitigation planning process by distributing promotional announcements regarding the public opportunity to respond to the online survey discussed in Section 3.2.6 in the County Annex. A copy of the survey is included in County Attachment 7: Survey Outreach Materials, found in Section 9.7. The following media was utilized:

- City Website ([www.ci.los-altos.ca.us/](http://www.ci.los-altos.ca.us/))
- Los Altos Town Crier newspaper

Copies of these outreach announcements are included in Section 13.7, Los Altos Attachment 1: Outreach Materials.

### ***Survey Results***

On November 1, 2010, the Local Planning Team released an online survey to solicit public input regarding concerns for hazard risk. The Local Planning Team also used this survey to gauge the level of public preparedness for emergencies. The survey responses received from the City of Los Altos residents are summarized below:

1. 13 out of 541 survey respondents were from the City of Los Altos.
2. Respondents were asked which five hazards, out of the 31 hazards the LPT identified, are of most concern to their neighborhood or home. Below are responses from the City of Los Altos (in order of most responses):

**Table 13-1: Hazards of Most Concern**

<b>Hazard</b>	<b>Number of Responses</b>
Earthquake: Ground Shaking	10
Infrastructure: Water System Disruption (no potable water)	10
Infrastructure: Electrical System Disruption (no power)	8
Infrastructure: Telecommunication System Disruption (no phone / cell service)	5
Infrastructure: Transportation Disruption (blocked roads / failed bridges)	4
Disease and Outbreak	3
Earthquake: Surface Rupture	3
Flood	3
Infrastructure: Energy System Disruption (no gas)	3
Infrastructure: Wastewater System Disruption (sewer backup)	3
Additional Hazard *	3
Hazardous Materials Spills (chemical/biological)	2
Wildfire	2
Wind (high winds)	2
Agricultural Pests and Diseases	1
Dam Failure	1
Drought	1
Bay Area Silting	0
Delta Levee Failure	0
Earthquake: Landslides	0
Earthquake: Liquefaction	0
Expansive Soils	0
Freeze	0
Hailstorm	0
Heat (extreme heat)	0
Land Subsidence (soil compaction due to subsurface water removal)	0
Landslide and Debris flow	0
Solar Storm	0
Thunder/Lightning Storms	0
Tornado	0
Tsunami	0
Volcano	0



\* Respondents noted the following additional hazards: personal and property safety if police protection is not available and downed power lines

3. Respondents were asked if a severe hazard event occurred today, such that all services were cut off from their home and they were unable to leave or access a store for 72 hours, which items they would have readily available. Below is a summary of responses from the City of Los Altos respondents:

**Table 13-2: Items Readily Available to Respondents**

<b>Item that is Readily Available</b>	<b>Responses</b>
Blanket(s)	11
Flashlight (with batteries)	11
Canned/Non-perishable Foods (ready to eat)	11
First Aid Kit	10
Portable AM/FM Radio (solar powered, hand crank, or batteries)	10
Potable Water (3 gallons per person)	9
Cash	8
Extra Medications	8
What else do you have in your emergency kit? *	7
Handheld “Walkie-Talkie” Radios (with batteries)	3
Important Family Photos/Documentation in a water and fire proof container	3

\* Respondents noted the following additional items in their emergency kits: hand warmers, portable toilet and toilet paper, propane stove, tarps, sleeping bags, outdoor clothes, shoes, ID, keys, cell phone, whistle, water bottle, 2-story chain ladder, tent, shovels, tools, garbage bags, lantern, fuel, extra batteries, mountain bikes, government emergency preparedness publications, vital records PortaVault system, pet food

4. Respondents were asked if they were familiar with the special needs of their neighbors in the event of a disaster situation.

- 8, or **61.5%** of respondents, answered that they **are not** familiar with the special needs of their neighbors.
- 5, or **38.5%** of respondents, answered that they **are** familiar with the special needs of their neighbors.

5. Respondents were asked if they are trained members of their Community Emergency Response Team (CERT) \*The City of Los Altos no longer provides CERT training.

- 7, or **53.8%** of respondents indicated that they are part of CERT.
- 6, or **46.2%** of respondents, indicated that they are not part of CERT, but would like to learn more about CERT.

- None of the respondents indicated that they are not part of CERT and are not interested in being a trained CERT member.

Respondents were asked to share why they are a trained CERT member, or why they are not part of CERT. The received responses are listed below:

- As a current Los Altos Councilwoman, I thought it was important to get CERT training
- The City of Los Altos is not offering the program
- We are elderly and our activities have been limited by illness during the last several months. But we hope at least one of us can attend classes if possible in 2011.
- Yes, but need a refresher
- Trained in CERT by Los Altos Police. Wanted to be better prepared to help my family and neighbors in case of an emergency. Would also like to become a HAM operator.
- I am a trained animal disaster responder with the Humane Society. To become more familiar with local emergency response procedures, I completed CERT training in Mountain View in 2008.

6. Respondents were asked what is the most important thing local government can do to help communities be more prepared for a disaster. The following summarizes the 11 responses received:

- **More CERT training along with refresher sessions**
- **Ensure personal and property protection against crime during and after a major disaster**
- **Institute automatic email, text messages, and phone calls in an emergency (Emergency Communication)**
- **Promote awareness**
- **Citizen training and outreach**
- **Emergency Preparedness information**
- **Develop community response teams**
- **Fuel backup**

7. Respondents were asked if they live in an apartment building or home with a living space above a garage or parking area.

- 7 or **58.3%** of respondents indicated that they **do not** live in an apartment or home with living space above a garage or parking area.
- 5, or **41.7%** of respondents, indicated that they **do** live in an apartment building or home with living space above a garage or parking area.
- One respondent skipped this question.

Those respondents who indicated that they do live in an apartment building or home with living space above the garage or parking area were asked to describe their level of concern for the building to collapse in a large earthquake event. 2 respondents indicated that they have “Moderate Concern”, while 2 respondents indicated that they have “No Concern”.

8. Respondents who are homeowners were asked if they have adequate homeowners insurance to cover the hazards that could impact their home. Below is a summary of responses:

**Table 13-3: Adequate Homeowners Insurance**

<b>Answer</b>	<b>Responses</b>
Yes, my insurance coverage should be adequate	8
No, I don't believe my insurance coverage would be adequate for a major disaster	1
Unsure	1
I do not have an insurance policy	0
Not applicable, I rent my current residence	0

9. Respondents were asked if they have earthquake insurance. Below is a summary of responses:

**Table 13-4: Earthquake Insurance**

<b>Answer</b>	<b>Responses</b>
Yes, I own my home and have earthquake insurance.	2
Yes, I rent my home and have earthquake insurance.	0
No, but I am interested in reviewing earthquake insurance options.	3
No, earthquake insurance is too expensive.	7
No, I do not need earthquake insurance.	0

10. Respondents were asked if they have flood insurance. Below is a summary of responses:

**Table 13-5: Flood Insurance**

<b>Answer</b>	<b>Responses</b>
Yes, I own my home and have flood insurance.	1
Yes, I rent my home and have flood insurance.	0
No, but I am interested in reviewing flood insurance options.	1
No, I do not need flood insurance	10

11. Respondents indicated the following as additional insurance listed for their home or property:

- **Standard home insurance plus a rider for water damage in basement**
- **Liability**
- **Condominium owner's insurance for personal possessions and interior decor**

12. Respondents were asked what they are doing to their property or within their home to reduce future damage from the hazards identified above. Below is a summary of responses:

**Table 13-6: Property Changes to Reduce Future Damage from Hazards**

<b>Property Mitigation</b>	<b>Responses</b>
Seismic retrofit of the structure and/or foundation	3
Roof retrofit using fire resistant material	3
Other *	2
Installed backflow prevention devices	2
Defensible space landscaping (clear vegetation around house to reduce wildfire risk)	1
Strengthened Openings (to reduce high hazard wind risk)	1
House elevation or first floor modification to prevent flood damage	1

\*The responses to “Other” were: “Monitored security system and natural gas powered generator” and “Our HOA meets regularly to discuss such issues and solve any problems.”

13. Respondents were asked if they work in Santa Clara County.

- 7, or **58.3%** of respondents, indicated that they **do** work in Santa Clara County.
- 5, or **41.7%** of respondents, indicated that they **do not** work in Santa Clara County.

14. Respondents were asked if their place of work is in an area susceptible to natural hazards.

Below is a list of natural hazards and responses from survey respondents:

**Table 13-7: Place of Work in Hazard Areas**

<b>Natural Hazard</b>	<b>Response</b>
Earthquake fault zone	7
Other *	3
High-risk flood zone	2
I don't know	1
Liquefaction zone	1
Landslide Risk Area	0
Wildland Urban Interface (wildfire risk area)	0

\* The response to “other” was: tsunami

15. Respondents were asked if their employer has a plan for disaster recovery in place.

- 7, or **87.5%** of respondents, indicated that their employer does have a disaster recovery plan in place.
- 1, or **12.5%** of respondents, indicated that their employer does not have a disaster recovery plan in place.
- 5 respondents skipped this question.

16. Respondents were asked if their employer has a workforce communications plan to implement following a disaster so they may contact their employees.

- 5, or **62.5%** of respondents indicated that their employer does have a workforce communications plan.
- 1, or **12.5%** of respondents indicated that their employer does not have a workforce communications plan.
- 2, or **25%** of respondents indicated that they are unsure if their employer has a workforce communications plan.
- 5 respondents skipped this question.

17. Respondents were asked to list any studies that they are aware of being conducted within their community or the county regarding the risk to future hazard events. 3 respondents replied to this question. These answers are summarized below. 10 respondents skipped this question.

- Articles about CERT in local newspaper
- SCC, SCVWD, the USGS, the SFPUC, and the WRCB Division of Dams have done studies on potential local hazard events.

18. Respondents were asked what recommendations they have for Santa Clara County and the incorporated cities to improve identification, prioritization, and implementation of actions intended to reduce future damage and increase resiliency. The following recommendations were received:

- Develop a list of priorities in the event of a major disaster
- Help the injured get professional care
- Have emergency shelters, safe water, and food in place
- Protect people and property from crime
- Restore infrastructure
- Move power utilities underground
- Make sure CalWater has an adequate emergency response plan

19. Respondents were asked to recommend any companies or local associations that should be involved in the Santa Clara County hazard mitigation planning process. The recommended organizations are listed below and were given the opportunity to review the draft plan as noted in the following section.

- Los Altos Chamber of Commerce
- CalWater
- San Jose Water Company

20. Respondents were asked if they would like to review and comment on a draft of their jurisdictions annex to the Multi-Jurisdictional Multi-Hazard Mitigation Plan.

- 5, or **55.6%** of respondents said they would like to review and comment on the draft plan.

- 4, or **44.4%** of respondents said they would not like to review and comment on the plan draft.
- 4 respondents skipped this question.

Five respondents who said they would like to review and comment on the draft plan included their contact information and were given the opportunity to review the draft plan as noted in the following section.

21. Respondents were asked to provide any additional comments/suggestions/questions. The responses are summarized below:

- I think the possibility of crime against people and property in the event of a major disaster is not reflected in this survey but will likely occur. I urge SCC and cities to plan for this as well as the other hazards listed in question 3.
- Los Altos needs street lights. If there were an emergency at night and residents needed to evacuate, the disaster would be exacerbated by the lack of lighting on the major roads in Los Altos.
- I would like to see the Los Altos disaster plan specifically address animal-related issues. It would help if the Los Altos CERT training, the City website, etc. could communicate the importance of planning for animals.

### ***Review Opportunities***

A review draft of this plan was submitted to Cal EMA on March 25, 2011 and subsequently forwarded to FEMA for review and comment regarding compliance with the Disaster Mitigation Act of 2000. In April 2011, the City of Los Altos initiated a public review period. The review draft was available for public review on the websites of the Santa Clara County Office of Emergency Services and the Association of Bay Area Governments. Additionally, the City of Los Altos issued a press release and posted the review draft on the City’s website to encourage public review. An email notice was sent to key stakeholders and interested residents to make them aware of the public review period. No comments were received on the review draft.

Copies of the outreach materials are included in Section 13.7, Los Altos Attachment 1: Outreach Materials.

## **13.3 CAPABILITY ASSESSMENT**

### **13.3.1 Mitigation Progress**

#### ***13.3.1.1 Strategy Rankings***

The City of Los Altos participated in ABAG’s revision of the regional strategies for development of this annex. Appendix G of Taming Natural Hazards presents a summary list of mitigation strategies with regional priorities and the hazards mitigated.

The City ranked those strategies in a spreadsheet provided by ABAG using the following scale:

Existing Program

Existing Program, Underfunded

Very High – Unofficial Program – Becomes Official on Plan Adoption, No Funding Needed

High – Actively Looking for Funding

Moderate

Under Study

Not Applicable, Not Appropriate, or Not Cost Effective

Not Yet Considered

Results of this ranking may be viewed online

at <http://www.abag.ca.gov/bayarea/eqmaps/mitigation/strategy.html>. A summary of these rankings is presented in Los Altos Attachment 2: Los Altos Strategies 2010, in Section 13.7.

The countywide Local Planning Team reviewed the priorities as ranked by the participating Santa Clara County jurisdictions to determine the operational area goals and objectives. The City of Los Altos is primarily concerned with potential impacts from Stevens Creek Dam failing and unmapped faults under Foothill College. Wildfire and riverine flooding are the other two main hazards of concern. The concern for wildfire is related to the neighboring jurisdiction of Los Altos Hills where residences are located in the wildland urban interface. The City has a good floodplain management ordinance to mitigate risk to riverine flooding. New mitigation actions the City of Los Altos has identified are discussed in Section 13.5.

### *13.3.1.2 Completed projects*

The City of Los Altos has ensured there are no remaining unreinforced masonry buildings within the City. All structures have been seismically retrofitted.

The Building Official has required more restrictive fire sprinklers regulations through the adoption of the 2007 California Code of Regulations. Amendments include required fire suppression systems to be installed in all new buildings and substantial addition/remodels, both for commercial and residential buildings since 3/1/08.

The Building Official has required more restrictive code regulations for lateral and uplift braced wall designs. These were amended back in the 1994 California Building Code. The Building Official has continued these more restrictive regulations for Los Altos as modified again in the 2010 adoption of the California Code of Regulations effective 01/01/11.

The Building Official has required more restrictive code regulations with regard to the 2010 California Plumbing Code. State Architect approved Earthquake Actuated Gas Shut off Valves are required on all new, replaced, repaired, and relocated gas meters.

Seismic Retrofit plans are available to the public for no cost through the Building Official. These plans facilitate retrofitting existing wood framed buildings without having the associated costs of hiring a California Licensed Engineer or Architect.

### 13.3.1.3 Current projects

The City is currently trying to incorporate liquefaction concerns into the building process. A revised Civic Center Master Plan to replace all government buildings is presently under consideration.

When the funding is available, the Building Official would like to allow grant monies for owners of soft story buildings (this law is in the making similar to URM requirements in the 1990's). In addition, they would like to inspect structures owned by the City of Los Altos for possible seismic retrofit and/or replacements. Los Altos believes that the City Engineering Division/Public Works should take the lead on this subject. This is listed as a mitigation action in Section 13.5.

### 13.3.2 Staff and Organizational Capabilities

#### 13.3.2.1 Departmental Responsibilities

The City of Los Altos operates several departments with capabilities for implementing hazard mitigation strategies. These departments and their roles and responsibilities are summarized in the following table.

**Table 13-8: Key Departments in the City of Los Altos**

Key Departments in the City of Los Altos
Departments
<p><b>Public Safety (Police and Fire) Personal Emergency Preparedness (PEP)</b>                      The mission of PEP is to harness the power of every individual through education, training, and volunteer service to make communities safer, stronger, and better prepared to respond to the threats of terrorism, crime, public health issues and disasters of all kinds.</p> <p><b>Community Development Department</b>                      The Community Development Department works to promote the orderly development of the community while preserving and enhancing the City's appearance and its distinct character. The Department also ensures that all projects within the City, both public and private, are constructed and maintained in a safe and legal environment. The Community Development Department is divided into three divisions.</p>



- **Planning Division**

The Planning Division is responsible for the development and administration of programs to guide the physical development of Los Altos, utilizing the General Plan, a variety of neighborhood Specific Plans and the City's Zoning Ordinance for policy guidance. The Division provides design and environmental review of development proposals and general public information services. The Division provides staffing to the Architecture and Site Review Committee, the Board of Adjustments, the Planning Commission, the Historical Commission, and the City Council with analyses and recommendations on development applications. Planning staff also works with the Code Enforcement Officer when necessary to document and correct building violations.

- **Building Division**

The Building Division is responsible for performing architectural and structural plan checks, scheduling and performing building inspections and providing general customer information services. The Division is responsible for administering the Uniform Building Codes and other applicable development regulations. Building staff also works with the Code Enforcement Officer when necessary to document and correct building violations.

- **Engineering Division**

The Public Works Department is responsible for the development and maintenance of the City's parks, buildings, bridges, streets, traffic signals, and wastewater/storm drain collection systems, as well as administration of the solid waste collection and recycling contract service. The Department is divided into two divisions, Engineering and Maintenance.

The Engineering Division oversees the City's long-range capital improvement program and provides all engineering, bidding and construction administration for City infrastructure. The Engineering Division also provides traffic-engineering services including administration of - the Neighborhood Traffic Management Program.

The Maintenance Division oversees the contracts for street sweeping and performs maintenance of the sanitary sewer collection system, storm drain system, parks, trees, and streets throughout the City.

With a clear hazard mitigation strategy, as outlined in this Local Hazard Mitigation Plan, the City's departments are able to implement their ongoing policies and programs with consideration of the identified hazard risks. In addition, these departments become aware of priority mitigation actions and can offer resources (financial or staffing) to assist with the implementation of those actions.

**13.3.2.2 Technical Capability**

For a successful mitigation program, it is necessary to have a diverse breadth of staff and technical capabilities. Planners, engineers, building inspectors, emergency managers, floodplain managers, people familiar with Geographic Information Systems (GIS), and grant writers are all essential to implementing mitigation actions. The following table summarizes the staffing capabilities available within the City of Los Altos.

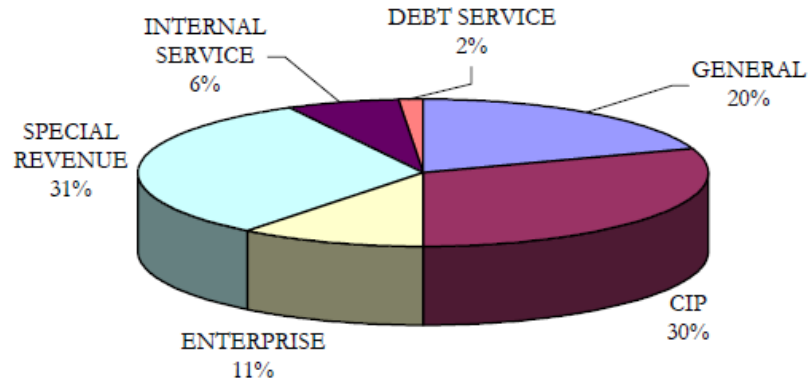
**Table 13-9: Technical Capability Matrix**

<b>Technical Capability Matrix</b>	
<i>Land Use Planners</i>	Planning Division
<i>Emergency manager</i>	Administration and Public Safety
<i>Civil or Building Engineers</i>	Engineering Division
<i>Floodplain manager</i>	Engineering and Planning Divisions
<i>Staff knowledgeable about hazards</i>	Public Safety, Engineering and Planning Division
<i>GIS staff</i>	Engineering and Planning Divisions
<i>Grant writers</i>	Engineering Division

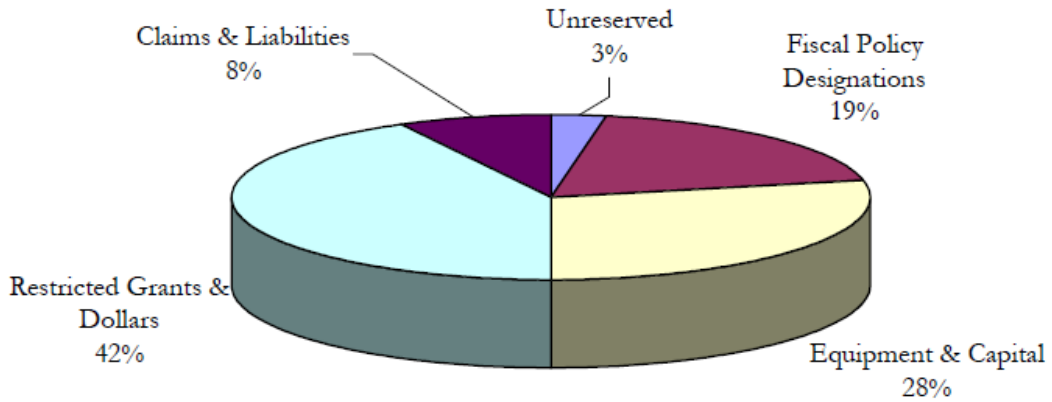
**13.3.2.3 Fiscal Capability**

The following pie charts and tables summarize Los Altos’ fiscal capabilities in terms of the City’s financial resources and allocated spending (2011 data).

**FUND BALANCE BY CATEGORY**



**FUND BALANCE AVAILABILITY**



**Table 13-10: Fiscal Capability Matrix**

<b>Fiscal Capability Matrix</b>							
	<i>Total General Fund (Beginning Balance)</i>	<i>Total Capital Improvement Funds</i>	<i>Total Enterprise Funds</i>	<i>Total Special Revenue Funds</i>	<i>Total Internal Service Funds</i>	<i>Total Debt Service Funds</i>	<i>Total Budget</i>
	7,280,340	4,073,583	2,878,107	8,686,810	1,700,032	415,063	22,914,822

**Table 13-11: Financing Mechanisms**

<b>Financing Mechanisms</b>							
<i>Taxes</i>	<i>Recreation Fees</i>	<i>Interest and Rent</i>	<i>Planning and Building</i>	<i>Franchise Fees</i>	<i>Police Fees</i>	<i>Other Fees</i>	<i>Total</i>
19,769,710	1,939,240	458,000	2,243,000	1,168,120	95,650	1,612,190	27,745,970

**13.3.2.4 Policy or Program Capability**

The City of Los Altos has several plans and ordinances in place which provide ample opportunities for implementing the hazard mitigation strategy outlined in this plan.

**13.3.2.4.1 Summary of Plans that Support Hazard Mitigation**

***Emergency Operations Plan***

The purpose of Los Altos’ Emergency Operations Plan (EOP) is to protect the safety and welfare of the citizens, as well as all employees and visitors in the City of Los Altos. The EOP is divided into four sections. The first section is the Basic Plan. The Basic Plan addresses the City’s responsibilities in emergencies associated with natural disaster, human-caused emergencies and technological incidents. It provides a framework for coordination of response and recovery efforts within the City and with local, State, and federal agencies as well as volunteer organizations. The Plan establishes an emergency organization to direct and control operations during a period of emergency by assigning responsibilities to specific personnel. In short, the Basic Plan

- Conforms to the State mandated Standardized Emergency Management System (SEMS), the National Incident Management System (NIMS), and effectively structures emergency response at all levels in compliance with the Incident Command System (ICS).
- Establishes response policies and procedures, providing the City with clear guidance for planning purposes.
- Describes and details procedural steps necessary to protect lives and property.
- Outlines coordination requirements.
- Provides a basis for unified training and response exercises to ensure compliance.

The Basic Plan indicates that there are four emergency phases: Mitigation, Preparedness, Response, and Recovery. During the mitigation phase, actions are taken to strengthen facilities to reduce the potential damage to structures and/or their contents. The Plan states that mitigation can create a safer environment that will result in lower response costs and fewer casualties. The preparedness phase involves emergency personnel reviewing the EOP, standard operating procedures, and checklists before the upcoming emergency. The response phase is broken into three categories: pre-impact,

immediate impact, and sustained. Pre-impact involves activating warning systems and the EOC and possibly evacuating residents. During immediate impact, emphasis is placed on saving lives, controlling the situation, and minimizing the effects of the disaster. Under the sustained category, assistance is provided to victims of the disaster and efforts are made to reduce secondary damage. Lastly, the recovery phase involves taking all actions necessary to restore the area to pre-event conditions or better. Mitigation for future hazards is an important part in the recovery phase.

The Hazard Vulnerability Assessment and Risk Analysis section of the Basic Plan identifies the hazards that threaten the City. Natural hazards include earthquakes, floods, wildland fires, landslides, and extreme weather and storms. Man-made hazard include hazardous materials, major vehicle accidents, dam failure, airplane crash, civil disturbance, and terrorism. This section of the EOP includes a hazard matrix that outlines each of the identified hazards, their likelihood of occurrence, and their severity. The location of these hazards in Los Altos is described in this section. Mitigation actions are also indicated in the Hazard Vulnerability Assessment and Risk Analysis section. To mitigate earthquakes, the City will continue to promote earthquake preparedness in the community through its Emergency Preparedness Plan and exercises coordinated through the City's Emergency Manager. Flood mitigation includes the City's participation in the National Flood Insurance Program. The City will further reduce the potential for flood hazard damage by implementing the adopted flood hazard area regulations for FEMA designated floodways, mudflow prone areas, and flood-related erosion prone areas. To prevent fire damages, the City will coordinate with the Santa Clara County Fire Department to implement fire hazard education and fire protection programs. The City will also ensure that construction is consistent with the current Uniform Fire Code and that water pressure is adequate for firefighting purposes. To mitigate hazardous waste incidents, generators and users in the City are required to comply with federal, state, and county regulations. The Hazardous Materials Compliance Division of the County Environmental Health Services Department ensures compliance and reporting in accordance with the Santa Clara County Hazardous Waste Management Plan.

A main objective of the EOP is to define the City's Emergency Operations Center (EOC), explain its role for emergency response, indicate when the EOC should become active during an emergency, and set guidelines for the EOC's response to specific emergencies. Section 2 of this EOP is dedicated to describing the role and responsibility of the EOC, while Section 3 includes EOC checklists for each representative in the EOC. In addition, Appendix 2 includes hazard specific checklists, which indicate who is responsible and what is to be done during a specific hazard.

The Director of Emergency Services (City Manager) is assigned the responsibility of reviewing and updating the EOP annually. In order to prepare for disasters, the City will conduct an EOC table top or an EOC functional exercise at least once a year, simulating an actual incident or disaster. If the EOC is activated for a declared emergency, the City will prepare an After Action Report that includes corrective actions for the future.

## **General Plan**

Today, Los Altos is a community grounded in the unique history of its agricultural and railroad culture, yet it is also a community of the 21st century that is prepared to face the challenges ahead. To meet these challenges, the General Plan for Los Altos is the primary source of long-range planning and policy direction that will be used to guide growth and preserve the quality of life within the community. Los Altos' General Plan facilitates hazard mitigation in several ways. Following is a brief summary of three General Plan Elements highlighting the capabilities for implementing and supporting hazard mitigation.

### **Natural Environmental and Hazards Element**

Natural events and conditions such as earthquakes, landslides, flooding, and fire can endanger human life and property. Los Altos uses the term Natural Environmental and Hazards Element to address safety issues in the General Plan. Top ranking priorities of defining community characteristics were: 1) Safety in the Downtown area. 2) Safety in neighborhoods. 3) Safety in families. Re-occurring themes included balanced development (village atmosphere vs. new development), community involvement, neighborhood preservation, public safety, quality education, and youth development.

This element outlines several goals. The first of which focuses on minimizing risks of personal injury and property damage associated with seismic activity, landslides, and other geologic hazards. The following policies listed in the Safety Element document how Los Altos intends to achieve this goal:

*Policy 1.1:* Update acceptable levels of risk/life safety standards when necessary, and see that buildings are brought up to those standards, consistent with state law.

*Policy 1.2:* Avoid placement of critical facilities and high occupancy structures in areas known to be prone to ground failure during an earthquake.

*Policy 1.3:* Require soil analysis and erosion mitigation for all development proposed on sites know to be prone to erosion or ground failure.

The community of Los Altos is subject to periodic flooding hazards. Natural flooding results from overflow along the City's four creeks during major rainstorms. While in the past, creek flooding was addressed through channelization to increase the capacity of the creeks, the City prefers to preserve the natural resources along the creek beds and use less intrusive methods to minimize flooding hazards. Other flooding related hazards within the City include dam inundation if the Stevens Creek Dam fails, and potential mud and debris flow during rain storms on the few hillsides within the planning area.

## **Land Use Element**

The purpose of the Land Use Element is to describe existing and future land use activity, which has been designed to achieve the City's long-range goals for physical development. The Element also addresses the relationship between development and environmental quality, potential hazards, and social and economic objectives. Land use planning takes into consideration housing needs identified in the Housing Element, natural and manmade hazards and development constraints identified in the Natural Environment & Hazards Element, and the open space and conservation policies outlined in the Open Space, Conservation & Community Facilities Element. The other General Plan elements ensure that infrastructure, utilities, and public facilities are available to accommodate planned land uses, and that the unique qualities of Los Altos are safeguarded and enhanced.

## **Future Development**

The El Camino Real commercial corridor is located along the City's northern edge, shared with the Cities of Mountain View and Palo Alto. Commercial property abutting this six-lane arterial road has been identified in the Land Use Element as one of the few areas with underutilized land and potential to redevelop or intensify existing development without jeopardizing the small-town residential character of the City.

## **Housing Element**

Los Altos maintains the H-7 voluntary code inspection program encompassing code compliance, rehabilitation, energy conservation, and minimum fire safety standards. Los Altos will continue the voluntary code inspection program encompassing code compliance, rehabilitation, energy conservation, and minimum fire safety standards.

## **Floodplain Management Plan**

The City of Los Altos has found that flood hazard areas within their jurisdiction are subject to periodic inundation which can result in the loss of life and property, health and safety hazards, disruption of commerce and governmental services, and public expenditures for flood protection and relief. The City has also found that these flood losses are caused by obstructions in areas of special flood hazard which can increase flood heights and velocities. Therefore, the purpose of the City's Flood Hazard Area Regulations is to minimize expenditure of public money for costly flood-control projects, the need for rescue and relief efforts associated with flooding, prolonged business interruptions, and damage to public facilities and utilities. The ordinance also ensures that potential buyers are notified that property is in an area of special flood hazard and that those who occupy property in those areas are held responsible for their actions. A floodplain administrator is responsible for the enforcement of this plan.

To reduce flood losses, the ordinance includes methods and provisions to control the alteration of natural floodplains, stream channels, and protective barriers; to control filling, grading, dredging and other development that can increase flood damage; to regulate the construction of flood barriers that can divert floodwaters or increase flood hazards in other areas; and to require that uses vulnerable to floods be protected against flood damage at the time of their construction. One of the provisions of this ordinance is that a development permit must be obtained before construction or development occurs within any area of special flood hazard, area of flood-related erosion hazard, or area of mudslide/mudflow. Construction standards, such as anchoring, building with flood resistant materials, and elevating and flood-proofing, are also required. The ordinance enforces that new and replacement water and sanitary sewage systems should be designed to minimize flood water infiltration and discharge into flood waters. Since floodways are extremely hazardous due to the velocity of floodwaters, no new construction should be developed in these areas, unless certification by a registered civil engineer or architect is provided demonstrating that the proposed development will not increase flood levels. Standards are also included for subdivisions, manufactured homes, as well as for mudslide and flood erosion prone areas.



## Capital Improvements Plan

There are several projects detailed in Los Altos' Capital Improvement Plan (CIP) for the years 2009-2013 that could help mitigate potential hazards. Many of the projects listed in the CIP are to prevent traffic and pedestrian accidents from occurring. Street resurfacing projects, which also include repair to damaged curbs and gutters and minor drainage improvements, extend the life of existing street surfaces and may reduce traffic incidents. Adding a street slurry seal, a type of surface treatment, to roads is a preventative maintenance project that prevents moisture from penetrating the pavement and softening the base material supporting the pavement, thus also extending the life of roads in Los Altos and helping to reduce traffic incidents. Street striping projects improve the visibility of pavement markings, which is also important in preventing traffic accidents. In addition, concrete repair projects have a primary focus on replacing damaged sidewalks that represent hazards to pedestrians.

Utility maintenance projects are also included in the City's CIP. Annual sewer repair projects are undertaken by the City of Los Altos to prevent a utility mishap from occurring in the City. The City recently completed a CIP project by building a municipal service center fuel station, in order to provide an emergency fuel system in the event of a major disaster. The City believes that the emergency preparedness for both police and maintenance would be at a much higher level with the installation of the fuel tank.

### 13.3.2.4.2 Summary of Ordinances that Support Hazard Mitigation

**Table 13-12: Summary of Ordinances that Support Hazard Mitigation**

Availability of Ordinances that Support Hazard Mitigation								
<i>Jurisdiction</i>	<i>Flood Damage Prevention Ordinance</i>	<i>Zoning Ordinance</i>	<i>Subdivision Ordinance</i>	<i>Post-disaster Red/Rec. Ordinance</i>	<i>Building Code</i>	<i>Fire Code</i>	<i>National Flood Insurance Program</i>	<i>NFIP Community Rating System</i>
<i>City of Los Altos</i>	Yes	Yes	Yes		Yes	Yes	Yes	Yes

The City of Los Altos identified several ordinances and policies currently utilized for hazard mitigation in the matrix of regional mitigation strategies prepared by ABAG as part of the 2010 plan update. Below is a summary of these key ordinances and policies.

## **General Plan**

The General Plan was identified as a method for implementing hazard mitigation strategies. The sections relevant to hazard mitigation are summarized in the General Plan section.

### **Los Altos Municipal Code – Buildings and Construction**

There is hereby adopted by reference as if fully set forth herein, the 2007 edition of the California Code of Regulations, Title 24, Part 1, incorporating the California Administrative Code, published by the International Code Council, and each and all of its regulations and provision. One copy is on file for use and examination by the public in the office of the city clerk. This section includes the building, plumbing, mechanical, electrical, energy and fire codes among others.

Specifically, the Fire Code states: The city council of the city of Los Altos hereby expressly finds that amendments to the California Fire Code adopted by this chapter and commencing with Section 12.24.080 are reasonably necessary for the protection of the public health, safety and welfare, due to the local climatic, geologic or topographical conditions specified as follows: The city of Los Altos experiences low humidity, high winds and warm temperatures during the summer months creating conditions which are particularly conducive to the ignition and spread of grass, brush and structure fires. Additionally, the city of Los Altos is geographically situated adjacent to active earthquake faults capable of producing substantial seismic events. Since the city of Los Altos is divided by creeks, an expressway and other substantial traffic corridors, the occurrence of a major earthquake would significantly impact the ability of fire crews to respond to emergencies should one or more bridges collapse or be substantially damaged. In addition, fire suppression capabilities would be severely limited should the water system be extensively damaged during the seismic event. Therefore, mitigation measures are necessary such as: automatic fire suppression systems, communications systems, access to buildings, seismic protection, safety controls for hazardous materials and other safe guards in order to minimize the risks to citizens, firefighters and property due to the severity of the fire threat and potential response delays.

### **Los Altos Municipal Code – Flood Hazard Area Regulations**

The flood hazard areas of the city are subject to periodic inundation which can result in the loss of life and property, health and safety hazards, the disruption of commerce and governmental services, extraordinary public expenditures for flood protection and relief, and the impairment of the tax base, all of which adversely affect the public health, safety, and general welfare. Such flood losses are caused, among other things, by the cumulative effect of obstructions in areas of special flood hazard which increase flood heights and velocities and, when inadequately anchored, damage uses in other areas. Uses which are inadequately floodproofed, elevated, or otherwise protected from flood damage also contribute to the flood loss.

In order to accomplish its purposes, this chapter includes methods and provisions for:

- A. Restricting or prohibiting uses which are dangerous to health, safety, and property due to water or erosion hazards or which result in damaging increases in erosion or in flood heights or velocities;
- B. Requiring that uses vulnerable to floods, including facilities which serve such uses, be protected against flood damage at the time of their initial construction;
- C. Controlling the alteration of natural floodplains, stream channels, and natural protective barriers which help accommodate or channel floodwaters;
- D. Controlling filling, grading, dredging, and other development which may increase flood damage; and
- E. Preventing or regulating the construction of flood barriers which will unnaturally divert floodwaters or which may increase flood hazards in other areas.

### 13.3.3 National Flood Insurance Program

For decades, the national response to flood disasters was simply to provide disaster relief to flood victims. Funded by citizen tax dollars, this approach failed to reduce losses and didn't provide a way to cover the damage costs of all flood victims. To compound the problem, the public generally couldn't buy flood coverage from insurance companies, because private insurance companies consider floods too costly to insure. In the face of mounting flood losses and escalating costs of disaster relief to U.S. taxpayers, Congress established the National Flood Insurance Program (NFIP). The goals of the program are to reduce future flood damage through floodplain management, and to provide people with flood insurance. Community participation in the NFIP is voluntary.

The City of Los Altos has participated in the National Flood Insurance Program since 1974. All residents of the City are eligible to purchase federal flood insurance. The City continues to maintain full compliance with the NFIP. There are no significant issues related to the community's participation or the City's implementation of the NFIP.

The Building, Engineering and Planning Divisions share this responsibility. The City of Los Altos participates in the National Flood Insurance Program (NFIP) by:

- Maintaining Flood Hazard Area Regulations limiting and regulating construction in floodplain to a higher regulatory standard;
- Requiring and maintaining Elevation Certificates for construction within the floodplain;
- Providing floodplain map information to property owners, realtors, lenders and insurance agents;
- Providing periodic outreach to property owners within the floodplain;
- Maintaining a list of floodplain management and flood protection documents in the library;

- Maintaining current floodplain maps and amendments, and special Santa Clara Water District floodplain studies;
- Managing stormwater runoff;
- Coordinating with the Santa Clara Water District on flood prevention assistance and open channel drainage system management; and
- Participating in the Community Rating System for the National Flood Insurance Program and maintaining a very good rating, thus qualifying our city for flood insurance rate reductions.

### ***13.3.3.1 Community Rating System (CRS)***

The CRS is a voluntary part of the National Flood Insurance Program that seeks to coordinate all flood-related activities, reduce flood losses, facilitate accurate insurance rating, and promote public awareness of flood insurance by creating incentives for a community to go beyond minimum floodplain management requirements. The incentives are in the form of insurance premium discounts. CRS ratings are on a 10-point scale (from 10 to 1, with 1 being the best rating), with residents of the community who live within FEMA’s Special Flood Hazard Areas (SFHA) receiving a 5% reduction in flood insurance rates for every Class improvement in the community’s CRS rating.

The City of Los Altos joined the Community Rating System in October 1991 and has a current class rating of 8. Properties within FEMA’s Special Flood Hazard Areas in Los Altos receive a 10% reduction in flood insurance rates. Properties outside the SFHA within Los Altos receive a 5% discount in flood insurance rates.

All insurance rates are based on where the structure is located in FEMA’s Flood Insurance Rate Maps (FIRMs). The most recent Digital FIRMs were adopted by the City on May 18, 2009.

### ***13.3.3.2 Repetitive Loss Properties***

The Federal Emergency Management Agency (FEMA) insures properties against flooding losses in the Bay Area through the [National Flood Insurance Program](#).

As part of the process to reduce or eliminate repetitive flooding to structures across the United States, FEMA has developed an official Repetitive Loss Strategy. The purpose behind the national strategy is to identify, catalog, and propose mitigation measures to reduce flood losses to the relatively few number of structures that absorb the majority of the premium dollars from the national flood insurance fund.

*A repetitive loss property* is defined by FEMA as “a property for which two or more National Flood Insurance Program losses of at least \$1,000 each have been paid within any 10-year period since 1978.”

The City of Los Altos has no repetitive flood loss properties.

Source: <http://quake.abag.ca.gov/mitigation/floodloss/>

### 13.3.4 Resource List:

Documents used in the assembly of this Capability Assessment include: City website, City FY10/11 Adopted Operating Budget, General Plan, Floodplain Management Plan, Capital Improvements Plan, Los Altos Municipal Code – Buildings and Construction, and Los Altos Municipal Code – Flood Hazard Area Regulations.

## 13.4 VULNERABILITY ASSESSMENT

### 13.4.1 Critical Facilities

During the development of this 2011 annex, the City identified 32 critical facilities. A summary listing of these facilities is shown in Table 13-13.

**Table 13-13: City of Los Altos Critical Facilities**

<b>Facility Name</b>	<b>ADDRESS</b>
Woodland Library	1975 Grant Road
STRUCTURE/RESTROOM	PORTLAND & MIRAMONTE
CLASSROOM	1575 HOLT AVENUE
MULTI-PURP@GRANT PARK	1575 HOLT AVENUE
GRANT PARK RESTROOM/PARK	FREMONT AVENUE & GRANT
MSC SHOP & SHED	707 FREMONT AVENUE
MSC GARAGE	707 FREMONT AVENUE
MSC CORP YARD	707 FREMONT AVENUE
MSC OFFICE/STORAGE	707 FREMONT AVENUE
FREMONT AVENUE BIKE BRIDGE	FREMONT AV & PERMANENTE CRK
POLICE DEPT	1 N. SAN ANTONIO RD
YOUTH CENTER	1 N. SAN ANTONIO RD
HISTORY HOUSE	51 S SAN ANTONIO ROAD
HILLVIEW HALL COMMUNITY CENTER	97 HILLVIEW AVE
HILLVIEW MULTI-PURPOSE	97 HILLVIEW AVE
HILLVIEW ADMINIST BLDG	97 HILLVIEW AVE
HILLVIEW SENIOR CITIZEN	97 HILLVIEW AVE
HILLVIEW CLASSROOMS 16-18	97 HILLVIEW AVE
HILLVIEW HOME	183 HILLVIEW
STG GARAGE	1 N. SAN ANTONIO RD

<b>Facility Name</b>	<b>ADDRESS</b>
SAN ANTONIO CLUB	647 S. SAN ANTONIO
HISTORY MUSEUM	1 N. SAN ANTONIO RD
THEATRE - LACT	97 HILLVIEW AVE
HILLVIEW ROOM 2 HAL BRADY	97 HILLVIEW AVE
HILLVIEW CHILDREN CENTER	97 HILLVIEW AVE
HILLVIEW CLASSROOMS 7,8,9	97 HILLVIEW AVE
HILLVIEW CLASSROOMS 13-15	97 HILLVIEW AVE
HETCH HETCHY BIKE BRIDGE	HETCH HETCHY & ADOBE CREEK
SHOUP PARK GARDEN BLDG.	400 UNIVERSITY AVE
SHOUP PRK WC	400 UNIVERSITY AVE
REDWOOD GROVE NATURE CENTER	482 UNIVERSITY AVE
REDWOOD GROVE CARETAKER RESIDENCE	482 UNIVERSITY AVE

This list of critical facilities is more recent than the listing delivered to ABAG during the regional planning process. Thus, the data available in ABAG’s online database regarding critical facilities may be inaccurate. This list of critical facilities and available information for them is available digitally in an excel spreadsheet from the City. A complete printing of the critical facilities data is included in Los Altos Attachment 3: Los Altos Exposure Analysis.

### 13.4.2 Exposure Analysis

Exposure analyses are used to quantify assets which are “exposed” to risk. This is the first step towards understanding the complete value of assets at risk to identified hazards. This section includes an exposure analysis (discussion of assets at risk) for the profiled hazards in Section 4.

Overlay analyses (using GIS) were conducted for the mappable hazards such as wildfire, flood, and the earthquake related hazards. These analyses compare the location of the critical facilities with the mapped hazard area (i.e. floodplains, wildfire threat zones, shaking potential areas, etc.) and result in a list of facilities which are at risk to each hazard. Not all hazards are mappable and some hazards, such as drought, are equally likely throughout the entire County. For these hazards, a general exposure summary is presented in Section 13.4.2.1.

#### 13.4.2.1 General Exposure

ABAG’s website (<http://quake.abag.ca.gov/mitigation/landuse/>) presents the results of the regional exposure analysis through a searchable online database. Users can view the summaries of land use and infrastructure exposed to the mappable hazards. This section presents the general summary of landuse and infrastructure in the City of Los Altos. These should be considered at risk to the hazards of equal likelihood throughout the entire County geography (i.e. drought, extreme heat, thunderstorm, etc).

JURISDICTION: Los Altos  
 COUNTY: Santa Clara  
 HAZARD: Land Use  
 BASIS: Existing Land Use, 2005 using 2009 hazard mapping

	<u>Total Acres</u>
<b>TOTAL RESIDENTIAL LAND [excluding mixed use]:</b>	<b>2,722</b>
1 unit/1-5 acre lot (Rural Residential)	46
1-3 units/acre	668
3-8 units/acre	1,953
>8 units/acre	55
Mobile Home Parks	0
<b>TOTAL MIXED RESIDENTIAL/COMMERCIAL:</b>	<b>0</b>
Within a Land Area	0
Within a Building	0
Mixture of Above or Unknown	0
<b>TOTAL MIXED COMMERCIAL/INDUSTRIAL:</b>	<b>9</b>
<b>TOTAL INDUSTRIAL [excluding mixed]:</b>	<b>1</b>
Light Industrial	0
Heavy Industrial	0
Salvage/Recycling, Mixture or Unknown	0
Food Processing, Warehousing	0
<b>TOTAL MAJOR INFRASTRUCTURE:</b>	<b>889</b>
Roads, Highway and Related Facilities	874
Rail Stations, Yards and Related Facilities	0
Airports	0
Ports	0
Power Facilities	0
Municipal Wastewater Facilities	0
Municipal Water Supply Facilities	0
Communication Facilities	15
Infrastructure--Other, Unknown	0
<b>TOTAL MILITARY:</b>	<b>0</b>
Military Residential	0
Military Hospital	0
Military Communications	0

Military Airport or Port	0
General Military	0
Open Military Lands	0
Closed Military Facilities	0
<b>TOTAL COMMERCIAL/SERVICES [excluding mixed]:</b>	<b>392</b>
Subtotal-Commercial:	145
Retail/Wholesale	65
Research/Office	62
Comm. Outdoor Recreation	0
Other, Mixture or Unknown	18
Subtotal-Education:	140
Educational Offices and Day Care	0
Elementary/Secondary	139
Colleges/Universities	0
Stadium Facilities	0
University Housing	0
Day Care Facilities	1
Subtotal-Hospitals and Health Care	11
Trauma Center Hospitals	0
Community or Local Hospitals	8
Surgery Centers	0
State Prisons	0
State Mental Health Facilities	0
Clinics and Long-Term Care	3
Subtotal-Public Institutions:	96
Convention Centers	0
Sports Stadiums	0
Churches/Synagogues/Other	75
City Halls/County Administration	1
Local Jails	0
Local Police/Fire/Emergency	1
Other-Comm. Centers/Libraries	19
<b>TOTAL URBAN OPEN:</b>	<b>66</b>
Golf Courses	0
Racetracks	0
Campgrounds and Other	0
Cemeteries	1
Parks	39
Vacant--Cleared for Redevelopment	0
Vacant--Undeveloped	27



Mixed Urban Open, Including Parks	0
<b>TOTAL AGRICULTURE:</b>	<b>0</b>
Cropland and Pasture	0
Orchards/Groves/Vineyards	0
Greenhouses	0
Confined Feeding	0
Farmsteads and Inactive	0
<b>TOTAL RANGELAND:</b>	<b>0</b>
Herbaceous Range	0
Shrub and Brush	0
Mixed Range	0
<b>TOTAL WETLANDS [Based on USGS Mapping]:</b>	<b>0</b>
Forested	0
Non-Forested	0
Salt Evaporators	0
Wetlands--Unknown	0
<b>TOTAL FOREST LAND:</b>	<b>0</b>
Deciduous	0
Evergreen	0
Mixed Forest	0
<b>TOTAL SPARSELY VEGETATED:</b>	<b>0</b>
Beaches	0
Other Sand	0
Bare Rock	0
Mines/Quarries	0
Transitional--Landfills	0
Transitional--Other	0
Transitional--Mixture	0
Mixed Sparsely Vegetated	0
	=====
	<u>Total Acres</u>
<b>TOTAL URBAN LAND:</b>	<b>4,078</b>
<b>TOTAL NON-URBAN LAND:</b>	<b>0</b>
<b>GRAND TOTAL:</b>	<b>4,078</b>

Source: Association of Bay Area Governments, 2009.

Note: Because of independent rounding, subcategories may not add to totals.

JURISDICTION: Los Altos  
 COUNTY: Santa Clara  
 HAZARD: Land Use  
 BASIS: Existing Infrastructure, 2009

	<u>Total Miles</u>
<b>ROADS:</b>	<b>143</b>
Interstate Highway	1
Primary US/State Highway	3
Secondary State/Co Highway	24
Local Road	111
Misc Ramp/Road	3
<b>TRANSIT:</b>	<b>0</b>
Altamont Commuter Express (ACE)	0
Amtrak	0
Bay Area Rapid Transit (BART)	0
Caltrain	0
San Francisco Muni Metro	0
Santa Clara VTA	0
<b>RAIL:</b>	<b>0</b>
All Railroads	0
<b>PIPELINES:</b>	<b>135</b>
Pipelines Under Roads	135
	=====

Source: Association of Bay Area Governments, 2009.  
 Miles of pipeline is an approximation based on miles of road within water service area boundaries and does not include major aqueducts.  
 Miles of pipeline is miles of water pipelines. Miles of sewer pipelines should be approximately the same.  
 Note: Because of independent rounding, subcategories may not add to totals.

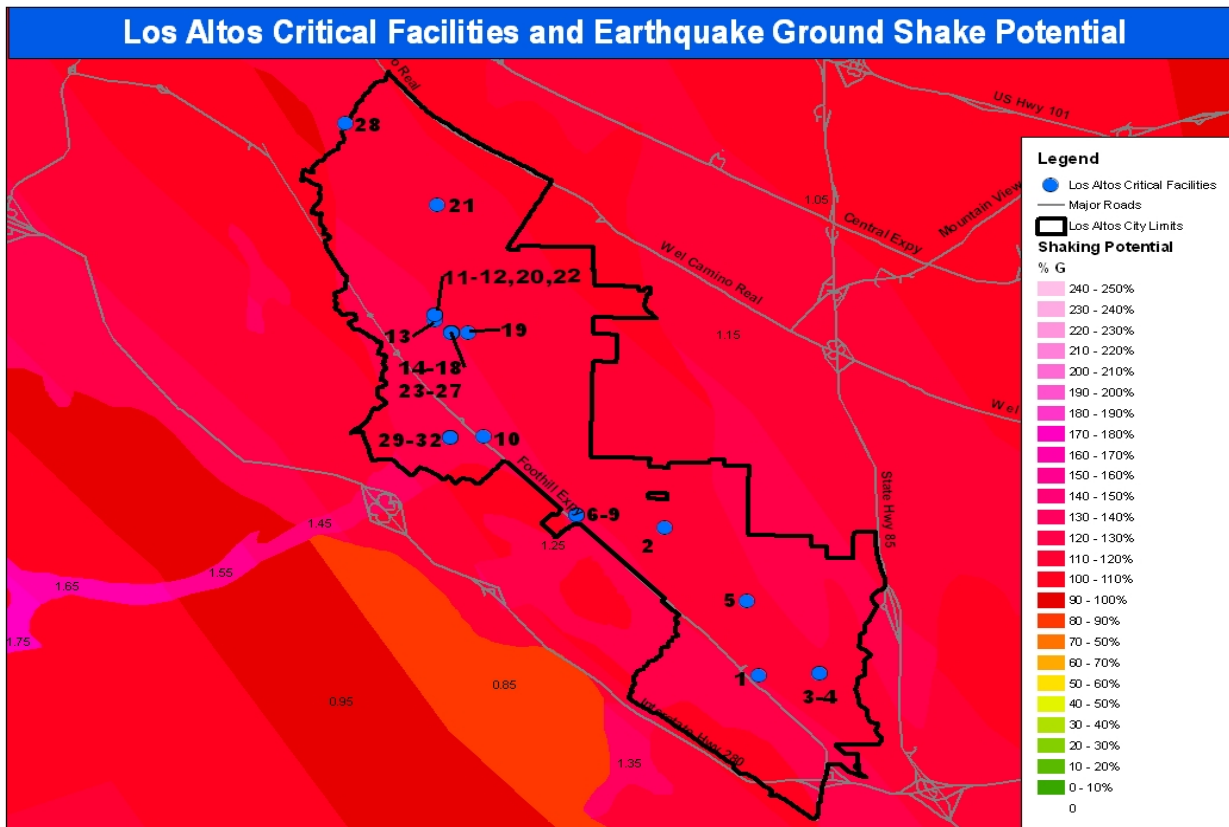
### 13.4.2.2 Critical Facilities Exposure by Hazard

ABAG's website (<http://quake.abag.ca.gov/mitigation/cf2010/>) presents the results of the regional facilities exposure analysis through a searchable online database. Users can view the summaries of how many facilities are exposed to the mappable hazards by category: health care facilities, schools, critical facilities, and bridges/interchanges. For the purposes of developing a City specific mitigation strategy, this section identifies which of the City's critical facilities are located in the mapped hazard areas.

The complete results from ABAG's exposure analysis are available digitally in an excel spreadsheet from the City. A complete printing of these results is included in Los Altos Attachment 3: Exposure Analysis. It should be noted that the critical facilities used in the following sections have been updated since ABAG's conducted exposure analysis. There may be some discrepancies with the identified critical facilities below and those in Los Altos Attachment 3: Exposure Analysis.

#### 13.4.2.2.1 Earthquake Related Hazards

##### Ground Shaking



Source: CA Department of Conservation

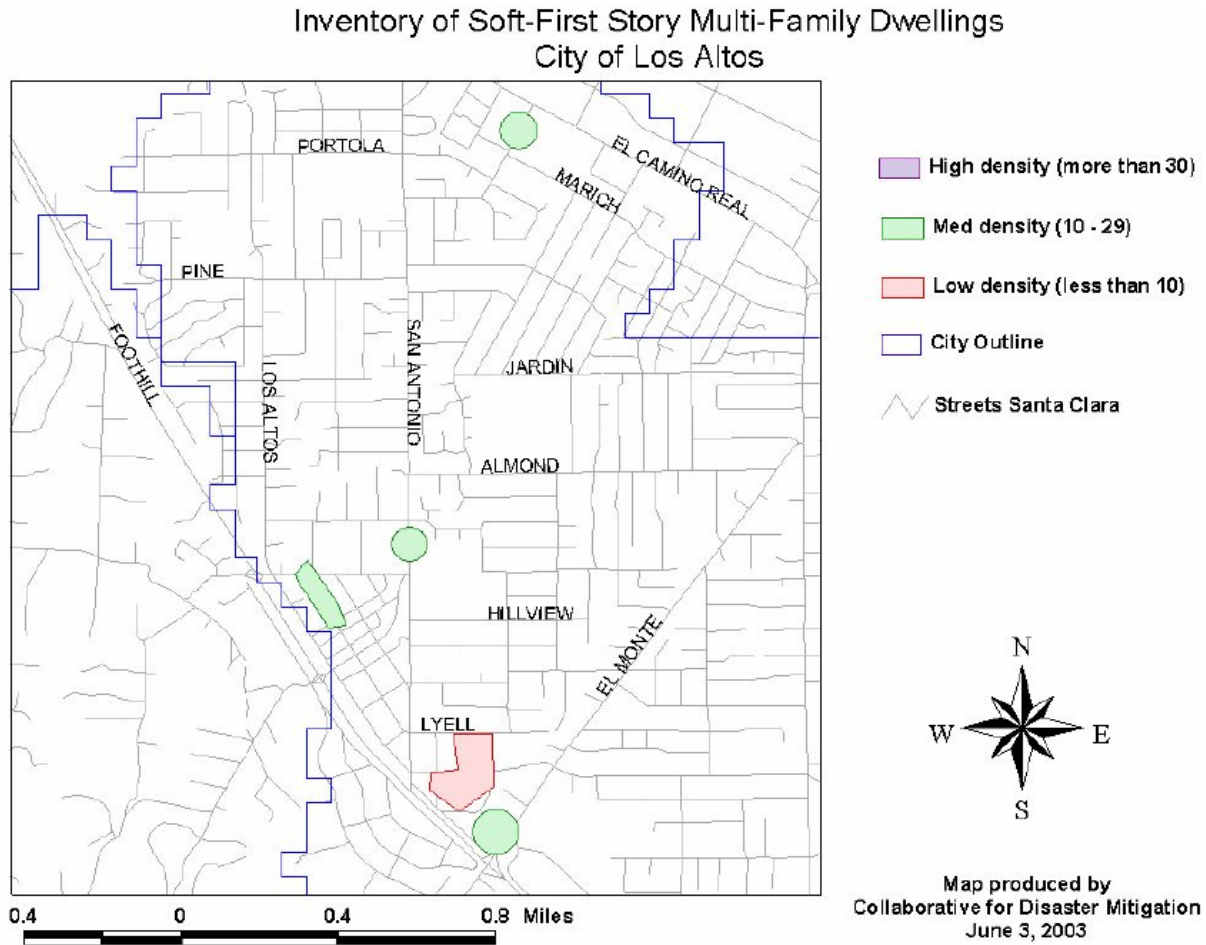
<b>ID</b>	<b>Critical Facility</b>	<b>Address</b>	<b>Peak Acceleration (%G)</b>	<b>Perceived Shaking</b>	<b>Potential Damage</b>	<b>Instrumental Intensity</b>	<b>BLDG Insured Value</b>	<b>Contents Insured Value</b>
10	Fremont Ave BIKE BRIDGE	Fremont Avenue and Permanente CRK	125	Extreme	Very Heavy	X+	\$67,000	\$0
16	Hillview ADMINIST BLDG	97 Hillview Avenue	125	Extreme	Very Heavy	X+	\$138,231	\$0
25	Hillview CHILDREN CENTER	97 Hillview Avenue	125	Extreme	Very Heavy	X+	\$359,227	\$0
27	Hillview CLASSROOMS 13-15	97 Hillview Avenue	125	Extreme	Very Heavy	X+	\$334,479	\$0
18	Hillview CLASSROOMS 16-18	97 Hillview Avenue	125	Extreme	Very Heavy	X+	\$345,555	\$0
26	Hillview CLASSROOMS 7,8,9	97 Hillview Avenue	125	Extreme	Very Heavy	X+	\$351,546	\$0
14	HILLVIEW HALL Community Center	97 Hillview Avenue	125	Extreme	Very Heavy	X+	\$502,527	\$191,610
15	Hillview MULTI-PURPOSE	97 Hillview Avenue	125	Extreme	Very Heavy	X+	\$349,051	\$0
24	Hillview Room 2 HAL BRADY	97 Hillview Avenue	125	Extreme	Very Heavy	X+	\$347,941	\$0
17	Hillview SENIOR CITIZEN	97 Hillview Avenue	125	Extreme	Very Heavy	X+	\$330,527	\$0
13	HISTORY HOUSE	51 S San Antonio Road	125	Extreme	Very Heavy	X+	\$178,530	\$29,870

<b>ID</b>	<b>Critical Facility</b>	<b>Address</b>	<b>Peak Acceleration (%G)</b>	<b>Perceived Shaking</b>	<b>Potential Damage</b>	<b>Instrumental Intensity</b>	<b>BLDG Insured Value</b>	<b>Contents Insured Value</b>
22	History MUSEUM	1 North San Antonio Road	125	Extreme	Very Heavy	X+	\$2,484,542	\$0
8	MSC CORP YARD	707 Fremont Avenue	125	Extreme	Very Heavy	X+	\$74,754	\$0
7	MSC GARAGE	707 Fremont Avenue	125	Extreme	Very Heavy	X+	\$262,671	\$0
9	MSC OFFICE/STORAGE	707 Fremont Avenue	125	Extreme	Very Heavy	X+	\$599,545	\$0
6	MSC SHOP & SHED	707 Fremont Avenue	125	Extreme	Very Heavy	X+	\$466,832	\$0
11	POLICE DEPT	1 North San Antonio Road	125	Extreme	Very Heavy	X+	\$1,639,488	\$949,619
32	Redwood Grove Caretaker RESIDENCE	482 University Avenue	125	Extreme	Very Heavy	X+	\$129,760	\$0
31	Redwood Grove NATURE CENTER	482 University Avenue	125	Extreme	Very Heavy	X+	\$387,677	\$0
29	Shoup Park GARDEN BLDG.	400 University Avenue	125	Extreme	Very Heavy	X+	\$752,430	\$0
30	SHOUP PRK WC	400 University Avenue	125	Extreme	Very Heavy	X+	\$52,090	\$0
20	STG GARAGE	1 North San Antonio Road	125	Extreme	Very Heavy	X+	\$80,065	\$0
23	THEATRE - LACT	97 Hillview Avenue	125	Extreme	Very Heavy	X+	\$255,966	\$0
12	YOUTH CENTER	1 North San Antonio Road	125	Extreme	Very Heavy	X+	\$491,954	\$12,246
1	Woodland Library	1975 Grant Road	115	Violent	Heavy	IX		
3	CLASSROOM	1575 Holt Avenue	115	Violent	Heavy	IX	\$536,071	\$0

<b>ID</b>	<b>Critical Facility</b>	<b>Address</b>	<b>Peak Acceleration (%G)</b>	<b>Perceived Shaking</b>	<b>Potential Damage</b>	<b>Instrumental Intensity</b>	<b>BLDG Insured Value</b>	<b>Contents Insured Value</b>
5	Grant Park RESTROOM/PARK	Fremont Avenue and Grant	115	Violent	Heavy	IX	\$40,922	\$0
28	Hetch Hetchy BIKE BRIDGE	Hetch Hetchy and Adobe Creek	115	Violent	Heavy	IX	\$0	\$0
19	HILLVIEW HOME	183 Hillview Avenue	115	Violent	Heavy	IX	\$162,062	\$0
4	MULTI-PURPOSE GRANT PARK	1575 Holt Avenue	115	Violent	Heavy	IX	\$625,758	\$0
2	RESTROOM	Portland and Miramonte	115	Violent	Heavy	IX	\$34,409	\$0
21	SAN ANTONIO CLUB	647 S San Antonio	115	Violent	Heavy	IX	\$151,809	\$4,064

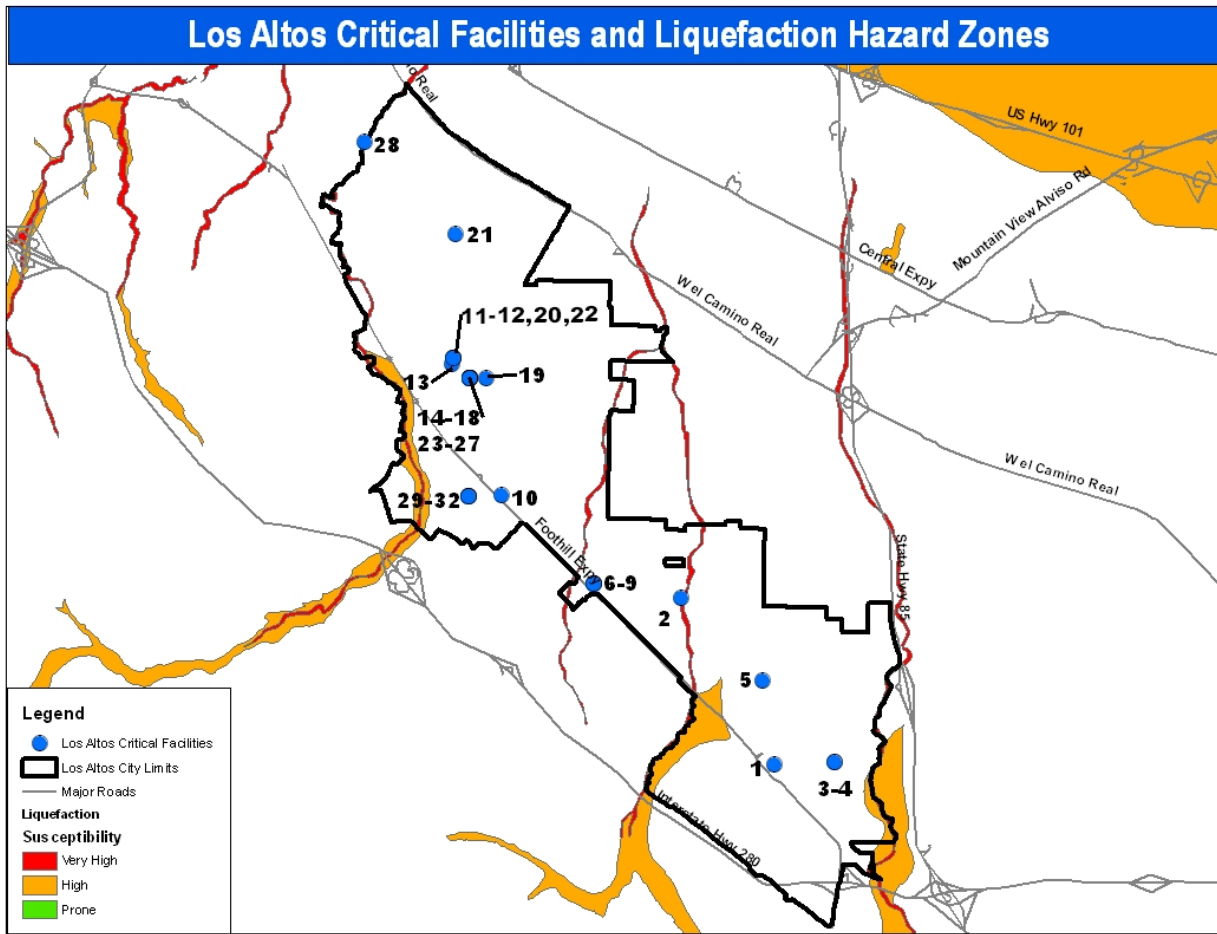
## Soft Story Multi-Family Dwellings

In 2003, the Collaborative for Disaster Mitigation at San Jose State University completed an “*Inventory of Soft-First Story Multi-Family Dwellings in Santa Clara County*”. At that time, the city of Los Altos had 19 soft-first story multi-family buildings including 222 residential units housing 555 occupants. Figure 13-1 below identifies the locations of these buildings.



**Figure 13-1: Inventory of Soft-First Story Multi-Family Dwellings-City of Los Altos**

*Earthquake Induced Liquefaction*

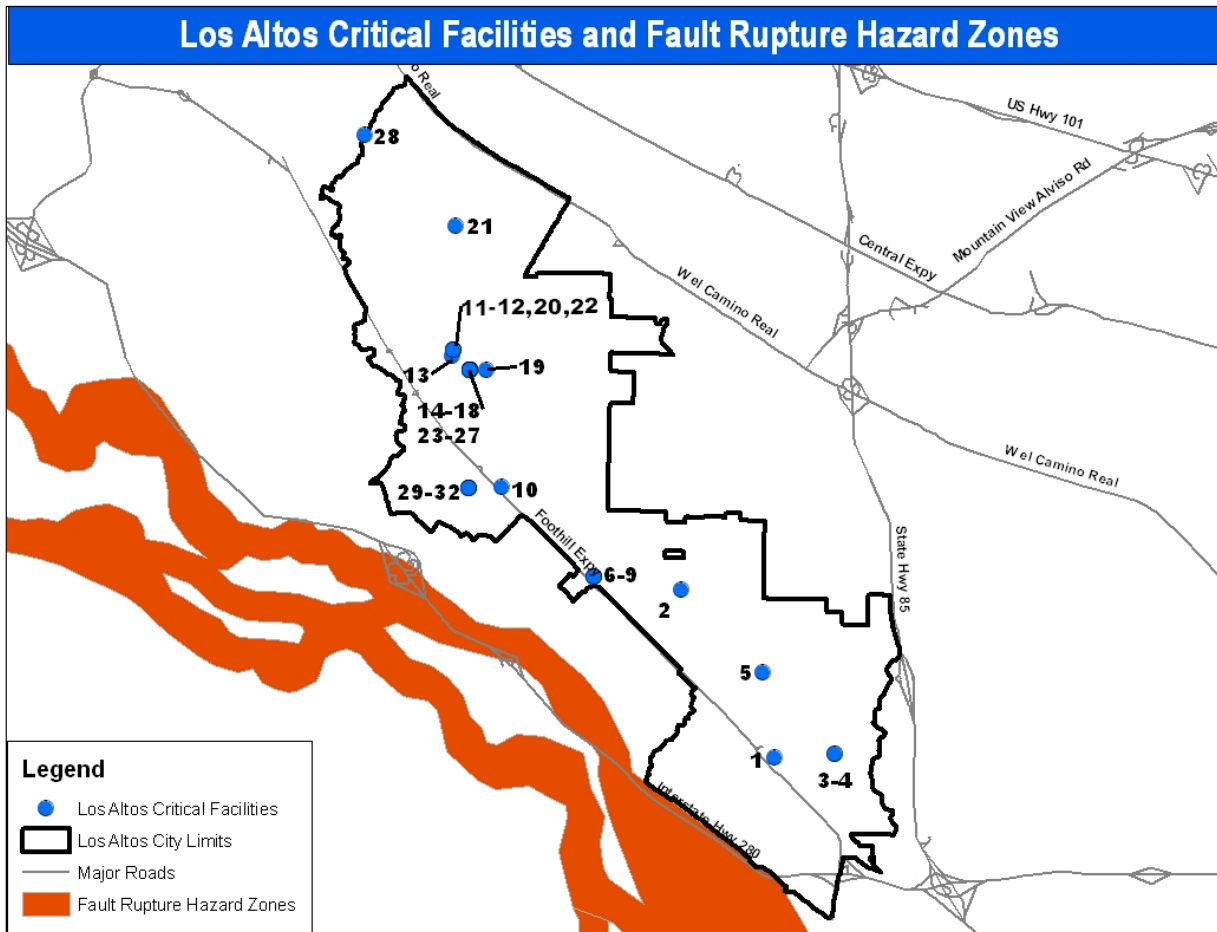


Source: Santa Clara Planning Office

Map ID	Critical Facility	Address	Liquefaction Hazard Zone	BLDG Insured Value	Contents Insured Value
28	Hetch Hetchy Bike Bridge	Hetch Hetchy and Adobe Creek	Very High	0	0



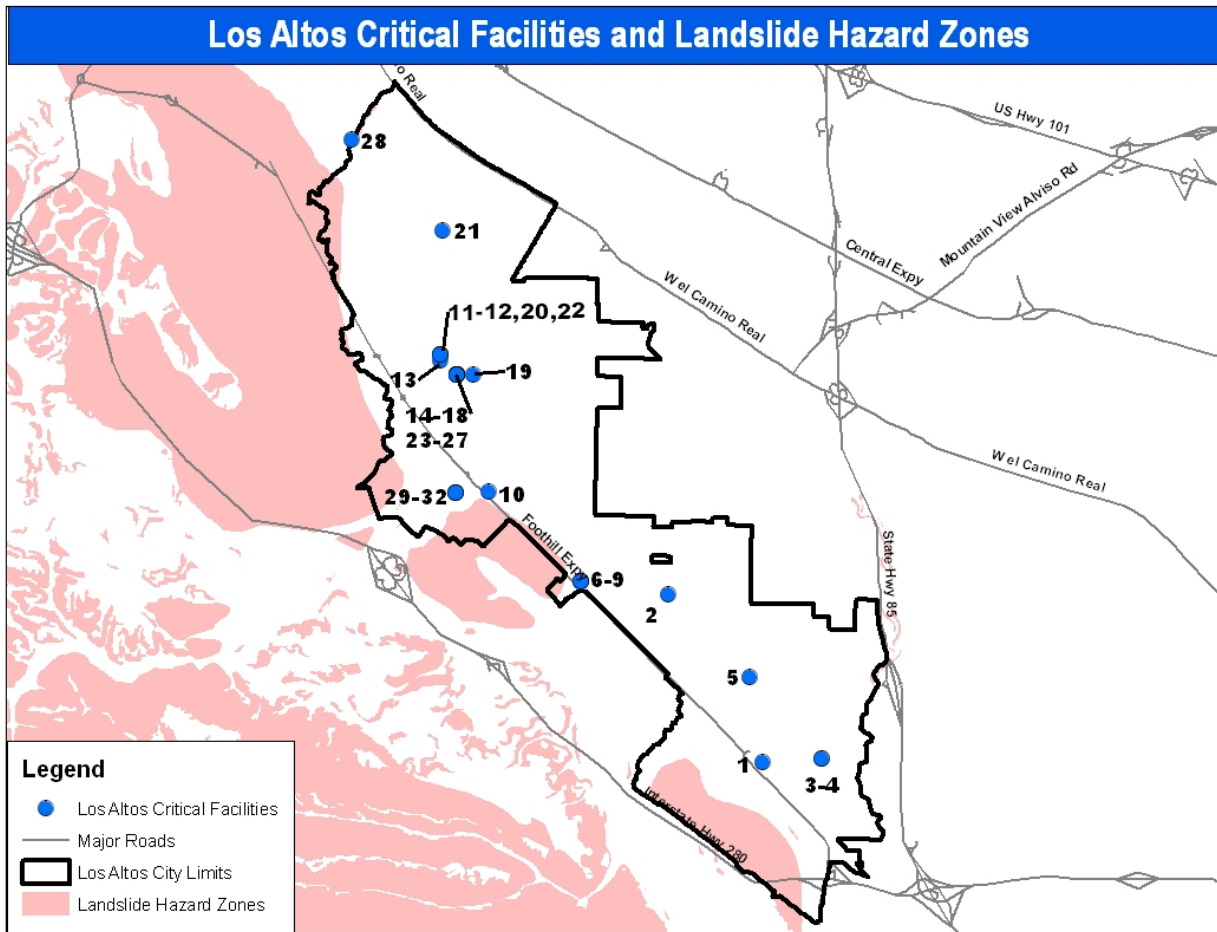
*Surface Rupture*



Source: California Geologic Survey, State of CA Department of Conservation

There are no critical facilities located within fault rupture hazard zones in Los Altos, CA.

*Earthquake Induced Landslides*



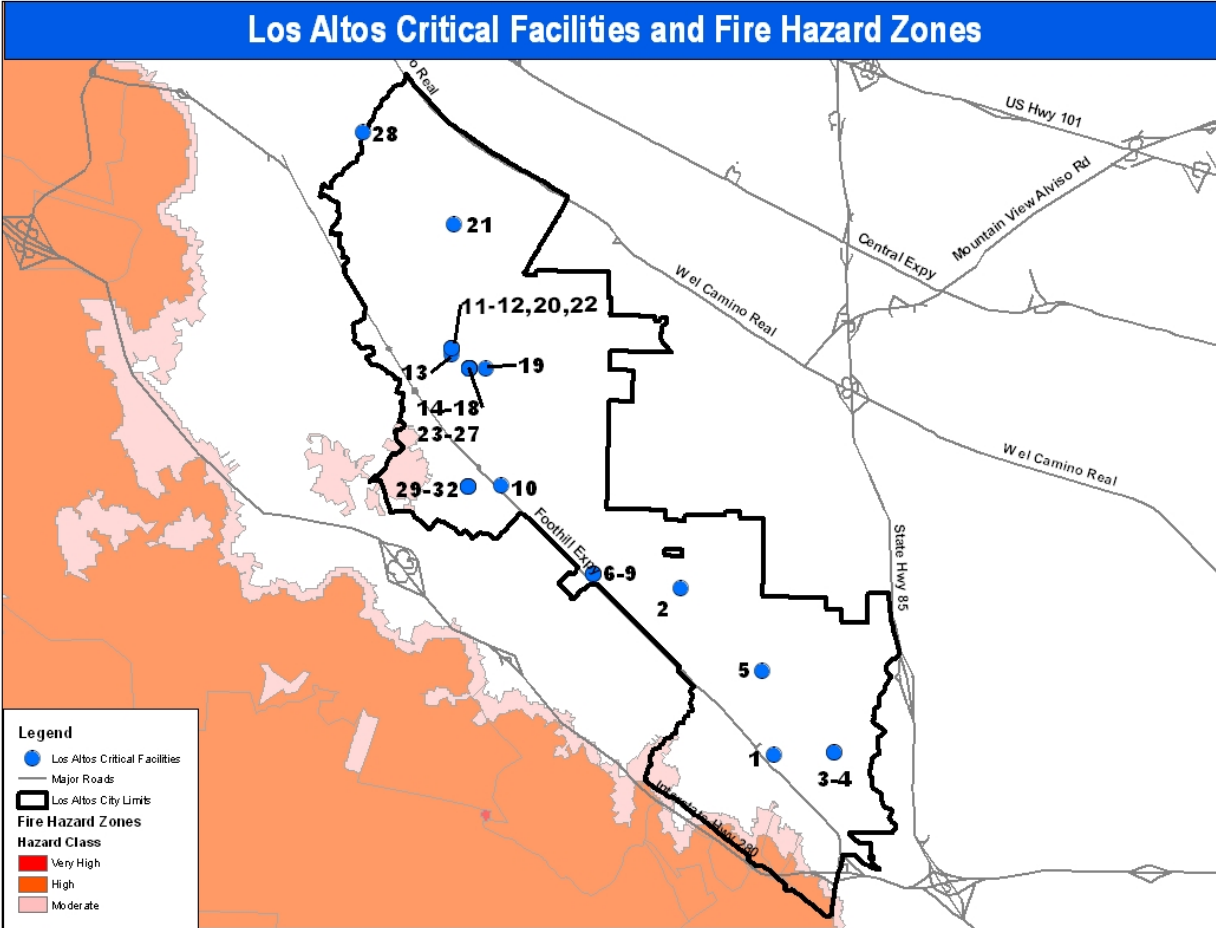
Source: Santa Clara Planning Office, CA State Department of Conservation

There are no critical facilities located within a landslide hazard zone in Los Altos, CA.

**13.4.2.2.2 Infrastructure Failure**

The City of Los Altos does not have any unique concerns or vulnerabilities regarding the hazard of infrastructure failure as presented in Section 4.

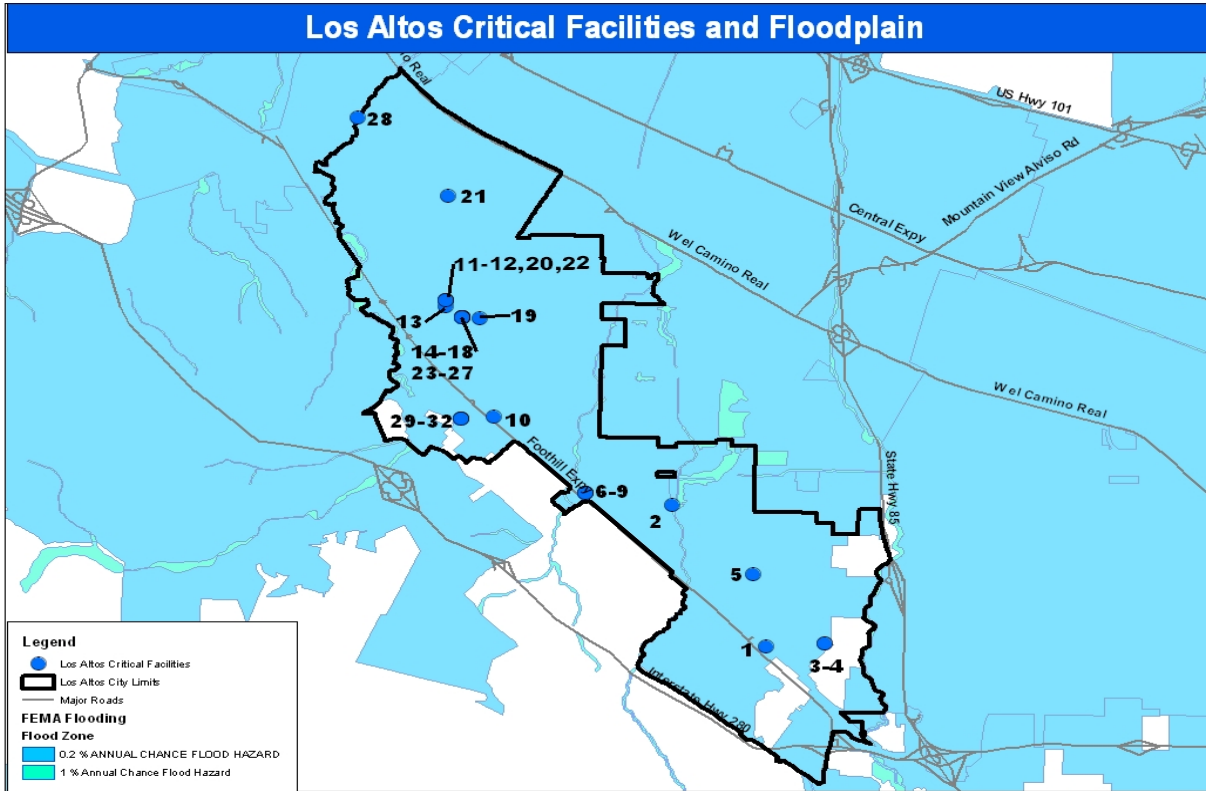
13.4.2.2.3 Wildfire



Source: CA Department of Forestry and Fire Protection

There are no critical facilities located in a fire hazard zone in Los Altos, CA.

13.4.2.2.4 Flooding



Source: FEMA- Santa Clara County DFIRM, 2009

The Municipal Service Center (MSC) is particularly susceptible to receiving damage from a flood hazard event. The MSC contains the primary Emergency Operations Center (EOC).

Map ID	Critical Facility	Address	Flood Zone (% annual chance)	Bldg Insured Value	Contents Insured Value
28	Hetch Hetchy Bike Bridge	Hetch Hetchy and Adobe Creek	1%	\$0	\$0
2	Public Restroom	Portland and Miramonte	1%	\$34,409	\$0
3	Classroom	1575 Holt Avenue	.2%	\$536,071	\$0
10	Fremont Avenue Bike Bridge	Fremont Avenue and Permanente CRK	.2%	\$67,000	\$0
5	Grant Park Restroom/Park	Fremont Avenue and Grant	.2%	\$40,922	\$0
16	Hillview Administ Bldg	97 Hillview Avenue	.2%	\$138,231	

<b>Map ID</b>	<b>Critical Facility</b>	<b>Address</b>	<b>Flood Zone (% annual chance)</b>	<b>Bldg Insured Value</b>	<b>Contents Insured Value</b>
25	Hillview Children Center	97 Hillview Avenue	.2%	\$359,227	
27	Hillview Classrooms 13-15	97 Hillview Avenue	.2%	\$334,479	
18	Hillview Classrooms 16-18	97 Hillview Avenue	.2%	\$345,555	
26	Hillview Classrooms 7, 8, 9	97 Hillview Avenue	.2%	\$351,546	
14	Hillview Hall Community Center	97 Hillview Avenue	.2%	\$502,527	\$191,610
19	Hillview Home	183 Hillview Avenue	.2%	\$162,062	
15	Hillview Multi-Purpose	97 Hillview Avenue	.2%	\$349,051	
24	Hillview Room 2 Hal Brady	97 Hillview Avenue	.2%	\$347,941	
17	Hillview Senior Citizen	97 Hillview Avenue	.2%	\$330,527	
13	History House	51 S San Antonio Road	.2%	\$178,530	\$29,870
22	History Museum	1 North San Antonio Road	.2%	\$2,484,542	
8	MSC Corp Yard	707 Fremont Avenue	.2%	\$74,754	\$0
7	MSC Garage	707 Fremont Avenue	.2%	\$262,671	\$0
9	MSC Office/Storage	707 Fremont Avenue	.2%	\$599,545	\$0
6	MSC Shop & Shed	707 Fremont Avenue	.2%	\$466,832	\$0
4	Multi-Purp@Grant Park	1575 Holt Avenue	.2%	\$625,758	\$0
11	Police Dept	1 North San Antonio Road	.2%	\$1,639,488	\$949,619
32	Redwood Grove Caretaker Residence	482 University Avenue	.2%	\$129,760	
31	Redwood Grove Nature Center	482 University Avenue	.2%	\$387,677	
21	San Antonio Club	647 S San Antonio	.2%	\$151,809	\$4,064
29	Shoup Park Garden BLDG	400 University Avenue	.2%	\$752,430	

<b>Map ID</b>	<b>Critical Facility</b>	<b>Address</b>	<b>Flood Zone (% annual chance)</b>	<b>Bldg Insured Value</b>	<b>Contents Insured Value</b>
30	Shoup PRK WC	400 University Avenue	.2%	\$52,090	
20	STG Garage	1 North San Antonio Road	.2%	\$80,065	
23	Theater-LACT	97 Hillview Avenue	.2%	\$255,966	
1	Woodland Library	1975 Grant Road	.2%		
12	Youth Center	1 North San Antonio Road	.2%	\$491,954	\$12,246

***Sea Level Rise***

There are no facilities in the City of Los Altos at risk to sea level rise.

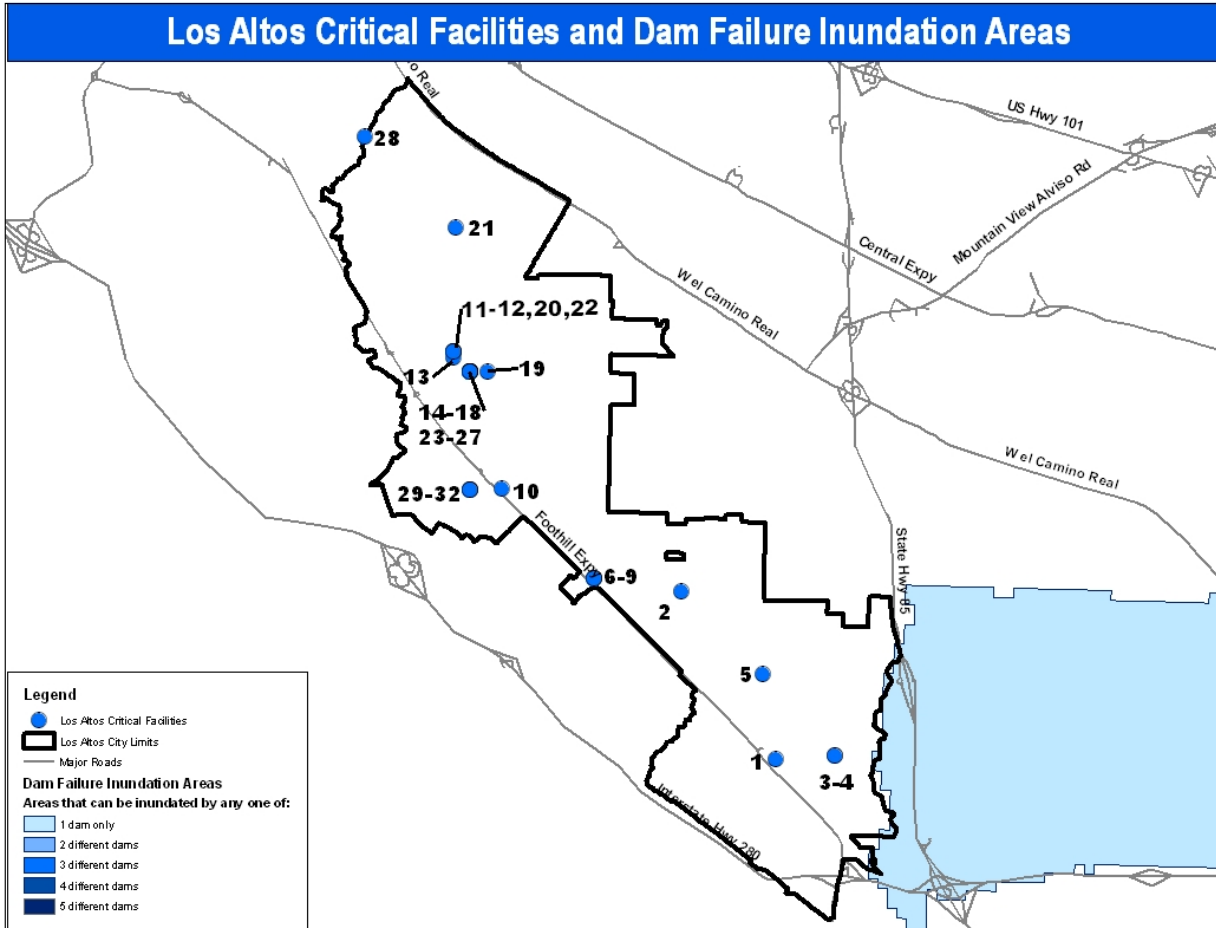
**13.4.2.2.5 Drought**

All populations, facilities, and assets are equally at risk to impact from drought. The City of Los Altos does not have any unique concerns regarding the hazard of drought as presented in Section 4.

**13.4.2.2.6 Solar Storm**

All populations, facilities, and assets are equally at risk to impact from solar storm events. The City of Los Altos does not have any unique concerns regarding the hazard of solar storm as presented in Section 4.

13.4.2.2.7 Dam Failure



Source: ABAG, 1995. Dam data from State of California Office of Emergency Services

There are no critical facilities located in a dam failure inundation area in Los Altos, CA.

The Stevens Creek dam and water district reservoir is uphill from the City of Los Altos and present hazards of inundation due to high ground shake potential in the area.

13.4.2.2.8 Disease Outbreak

All populations, facilities, and assets are equally at risk to impact from disease outbreak. The City of Los Altos does not have any unique concerns regarding the hazard of disease outbreak as presented in Section 4.

#### 13.4.2.2.9 Freeze

All populations, facilities, and assets are equally at risk to impact from freeze occurrences. The City of Los Altos does not have any unique concerns regarding the hazard of freeze as presented in Section 4.

#### 13.4.2.2.10 Wind

All populations, facilities, and assets are equally at risk to impact from high winds. The City of Los Altos does not have any unique concerns regarding the hazard of wind as presented in Section 4.

#### 13.4.2.2.11 Heat

All populations, facilities, and assets are equally at risk to impact from extreme heat events. The City of Los Altos does not have any unique concerns regarding the hazard of heat as presented in Section 4.

#### 13.4.2.2.12 Agricultural Pest

Agricultural pests are not of particular concern to the City of Los Altos.

#### 13.4.2.2.13 Thunder and Lightning

All populations, facilities, and assets are equally at risk to impact from thunder and lightning events. The City of Los Altos does not have any unique concerns regarding the hazard of thunder and lightning as presented in Section 4.

#### 13.4.2.2.14 Siltation – Bay Area

Siltation is not of particular concern to the City of Los Altos.

#### 13.4.2.2.15 Tornado

All populations, facilities, and assets are equally at risk to impact from tornado occurrences. The City of Los Altos does not have any unique concerns regarding the hazard of tornado as presented in Section 4.

#### 13.4.2.2.16 Hazardous Materials

Hazardous Materials spills are not of particular concern to the City of Los Altos.



#### 13.4.2.2.17 Landslide and Debris Flow

Landslide and Debris Flow is not of particular concern to the City of Los Altos.

#### 13.4.2.2.18 Other Hazards

Land Subsidence is not of particular concern to the City of Los Altos.

Expansive Soils are not of particular concern to the City of Los Altos.

Hailstorms are not of particular concern to the City of Los Altos.

Tsunami is not a hazard of concern for the City of Los Altos.

Volcano eruptions are not a hazard of concern for the City of Los Altos.

### **13.5 MITIGATION STRATEGY**

#### 13.5.1 Primary Concerns

Based on the exposure analysis, the most critical facilities in the City of Los Altos are at risk of being impacted by ground shaking or flooding. The City is mitigating flood risk on an ongoing basis through the floodplain management ordinance and participation in the NFIP. The City of Los Altos is primarily concerned with potential impacts from Stevens Creek Dam failing and unmapped faults under Foothill College.

#### 13.5.2 Mitigation Actions

In addition to participating in the Local Planning Team and supporting the implementation of the prioritized county-wide mitigation actions, the City of Los Altos identified the following potential mitigation actions for implementation within the City.

**Problem Statement:**

Approximately 1/2 of the City of Los Altos residential neighborhoods are without storm drain systems. Minor flooding occurs in low lying areas and become more impacted during severe storms.

**Project Description:** City has started a storm drain master plan and identified areas needing storm drain system. Funding will be needed implement master plan construction requirements.

**Corresponding ABAG Strategy Number:** INFR Flooding d-5, d-6

**Applicable Hazards**

<u>Significant</u>	<u>Moderate</u>	<u>Limited</u>
<p><b>Earthquakes</b></p> <input type="checkbox"/> Ground Shaking <input type="checkbox"/> Liquefaction <input type="checkbox"/> Surface Rupture <input type="checkbox"/> Landslides	<input checked="" type="checkbox"/> Flood <input type="checkbox"/> Drought <input type="checkbox"/> Solar Storm <input type="checkbox"/> Dam Failure <input type="checkbox"/> Disease and Outbreak <input type="checkbox"/> Freeze <input type="checkbox"/> Wind (high winds) <input type="checkbox"/> Extreme Heat <input type="checkbox"/> Agricultural Pests <input type="checkbox"/> Thunder / Lightning Storms <input type="checkbox"/> Bay Area Silting <input type="checkbox"/> Tornado <input type="checkbox"/> Hazardous Materials (Chemical/Biological) Spills <input type="checkbox"/> Landslide and Debris Flow	<input type="checkbox"/> Land Subsidence <input type="checkbox"/> Expansive Soils <input type="checkbox"/> Hailstorm <input type="checkbox"/> Tsunami <input type="checkbox"/> Volcano
<p><b>Infrastructure Failure</b></p> <input type="checkbox"/> Electrical System <input type="checkbox"/> Energy System <input type="checkbox"/> Telecommunication System <input type="checkbox"/> Transportation System <input type="checkbox"/> Waste Water System <input type="checkbox"/> Water System  <input type="checkbox"/> Delta Levee Failure <input type="checkbox"/> Wildfire		

**Potential Funding Sources:** HMGP, PDM

**Responsible Department:**

Engineering Services Division

**Target Completion Date:** to be determined

**Additional Comments / Status Report:**

The City has allocated \$306,000 for the storm drain master plan. Project is at 85% completion. Funding for implementation has yet to be determined.

**Problem Statement:** The City of Los Altos is located in a highly active seismic region. Specifically, Seismic Design Category “D” and “E”, these categories are considered the most dangerous areas of potential ground shaking (earthquakes). Commencing January 2011, in order to mitigate seismic hazards, the City of Los Altos shall implement the following four areas including but not limited to; health and safety of the general public, loss of life, fire and structural damage to buildings.

**Project Description:** The City of Los Altos requires State Architect approved Earthquake Actuated Gas Shut off Valves on all new, replaced, repaired, and relocated gas meters. 2) Los Altos requires more restrictive code regulations for lateral and uplift braced wall designs than the newly adopted 2010 California Building Code. 3) The City requires new commercial and residential buildings including additions over 50% to existing floor areas to be outfitted with fire suppressions systems. 4) Pre-approved engineered seismic plans are available at no cost to the general public to facilitate existing wood framed structures being earthquake retrofitted without the cost of hiring licensed engineers. Additional grant funding is needed to retrofit existing buildings with approved Earth Quake Actuated Gas Valves.

**Corresponding ABAG Strategy Number:**

**Applicable Hazards**

<u>Significant</u>	<u>Moderate</u>	<u>Limited</u>
<p><b>Earthquakes</b>  <input checked="" type="checkbox"/> Ground Shaking  <input checked="" type="checkbox"/> Liquefaction  <input checked="" type="checkbox"/> Surface Rupture  <input type="checkbox"/> Landslides</p> <p><b>Infrastructure Failure</b>  <input type="checkbox"/> Electrical System  <input checked="" type="checkbox"/> Energy System  <input type="checkbox"/> Telecommunication System  <input type="checkbox"/> Transportation System  <input type="checkbox"/> Waste Water System  <input type="checkbox"/> Water System</p> <p><input type="checkbox"/> Delta Levee Failure  <input type="checkbox"/> Wildfire</p>	<input type="checkbox"/> Flood <input type="checkbox"/> Drought <input type="checkbox"/> Solar Storm <input type="checkbox"/> Dam Failure <input type="checkbox"/> Disease and Outbreak <input type="checkbox"/> Freeze <input type="checkbox"/> Wind (high winds) <input type="checkbox"/> Extreme Heat <input type="checkbox"/> Agricultural Pests <input type="checkbox"/> Thunder / Lightning Storms <input type="checkbox"/> Bay Area Silting <input type="checkbox"/> Tornado <input type="checkbox"/> Hazardous Materials (Chemical/Biological) Spills <input type="checkbox"/> Landslide and Debris Flow	<input type="checkbox"/> Land Subsidence <input type="checkbox"/> Expansive Soils <input type="checkbox"/> Hailstorm <input type="checkbox"/> Tsunami <input type="checkbox"/> Volcano

**Potential Funding Sources:** HMGP, PDM

**Responsible Department:** Building, Engineering and Planning Divisions

**Target Completion Date:** to be determined

**Additional Comments / Status Report:** The City of Los Altos incorporates approximately 11,000 individual parcels. The City of Los Altos does not have the funding to pursue retrofitting existing buildings with Earthquake Actuated Gas Valves.

**Problem Statement:**

While critical city - owned structures have been identified, there has not been a seismic assessment of these structures including essential services facilities.

**Project Description:**

Program to implement the seismic assessment study of city-owned structures and essential services facilities. The intent of the program is to prioritize recommendations from the study to address needs for seismic retrofit or other recommended actions for pre-disaster mitigation.

**Corresponding ABAG Strategy Number:****Applicable Hazards****Significant****Earthquakes**

- Ground Shaking
- Liquefaction
- Surface Rupture
- Landslides

**Infrastructure Failure**

- Electrical System
- Energy System
- Telecommunication System
- Transportation System
- Waste Water System
- Water System
  
- Delta Levee Failure
- Wildfire

**Moderate**

- Flood
- Drought
- Solar Storm
- Dam Failure
- Disease and Outbreak
- Freeze
- Wind (high winds)
- Extreme Heat
- Agricultural Pests
- Thunder / Lightning Storms
- Bay Area Silting
- Tornado
- Hazardous Materials  
(Chemical/Biological) Spills
- Landslide and Debris Flow

**Limited**

- Land Subsidence
- Expansive Soils
- Hailstorm
- Tsunami
- Volcano

**Potential Funding Sources:** HMGP, PDM, No current funding sources exist. Need is recognized.

**Responsible Department:** Planning and Engineering

**Target Completion Date:** Open

**Additional Comments / Status Report:** While no funding exists for this program, pre-disaster grant funding will be researched

## **13.6 PLAN MAINTENANCE**

### **13.6.1 Monitoring, evaluating, updating the plan**

The City of Los Altos Police Department will be responsible for ensuring that this annex is monitored on an on-going basis. However, the major disasters affecting Los Altos' community, legal changes, notices from ABAG (as the lead agency in this process), notices from Santa Clara County (lead agency for the County-wide Annex), and other triggers will be used as well. Finally, the Annex will be a discussion/work item on the City's Emergency Operations Center agenda each year, and department heads and other emergency preparedness staff, who serve in the City's Emergency Operations Center, will focus on evaluating the Annex in light of technological and political changes that may occur during the year or other significant events. This group, in collaboration with Santa Clara County, will be responsible for determining if the plan should be updated.

The City of Los Altos is committed to reviewing and updating this plan annex at least once every five years, as required by the Disaster Mitigation Act of 2000. The City's Emergency Services Coordinator will contact ABAG four years after this plan is approved to ensure that ABAG plans to undertake the plan update process. If so, the City plans to participate in the multi-jurisdictional plan. If ABAG is unwilling or unable to act as the lead agency in the multi-jurisdictional effort, other agencies will be contacted, including the Santa Clara County Office of Emergency Services. The jurisdictions within Santa Clara County should continue to work together on updating this multi-jurisdictional plan.

The public will continue to be involved whenever the plan is updated or as appropriate during the monitoring and evaluation process. Prior to adoption of updates, the City will provide the opportunity for the public to comment on the updates. A public notice will be published prior to the meeting to announce the comment period and meeting logistics. Moreover, the City will engage stakeholders in community emergency planning.

### **13.6.2 Point of Contact**

Comments or suggestions regarding this plan may be submitted at any time to Paul Arguelles, Sergeant.

Contact information: [parguelles@losaltosca.gov](mailto:parguelles@losaltosca.gov), 650-947-2663

## **13.7 CITY OF LOS ALTOS APPENDIX**

### **13.7.1 Los Altos Attachment 1: Outreach Materials**

The City of Los Altos notified residents and businesses of the hazard mitigation planning process by distributing promotional announcements regarding the public opportunity to respond to the online survey. This Attachment includes those outreach materials.

Home

I Want To...

Resident

Business

Visitor

City Departments



Quick Links

- Council Meetings & Agendas
- Committees and Commissions
- AccuWeather.com® Events Calendar  
Los Altos, CA
- Power Services
- Cloudy 57°F Recreation
- RealFeel: 55°F
- Municipal Code
- Community Center Master Plan
- Historical Financial Reports
- Adopted City Budget
- Salary Schedule by Postion
- E-mail Notification Signup
- Job Openings
- Contact Us



NEWS AND HIGHLIGHTS

**Blach School Neighborhood Traffic Study**

Notice of Public Meeting and Report to Council

[Notice](#)

[Report](#)

[Exhibits](#)

When: Tuesday, January 4 2011 at 6:00 PM

Where: Los Altos High School - Eagle Theater @ 201 Almond Ave, Los Altos



**Public Input Sought in Disaster Planning for Los Altos/Santa Clara County**

The Santa Clara County Local Planning Team has identified 25 possible hazard threats, such as earthquakes, wild fires, and drought, within the county. Santa Clara County's Office of Emergency Services is collaborating with the incorporated cities to update the countywide local hazard mitigation plan. This plan outlines mechanisms for increasing our community's resiliency to natural hazard events.

Public feedback is critical to creating a safer community. Please take a few moments to complete the brief survey at: <http://www.surveymonkey.com/s/2010SCCHMP>.

The survey will be available online through **Saturday, January 15, 2011**. All residents or individuals employed within the boundaries of Santa Clara County and incorporated cities are encouraged to respond to the survey.

Hazard "mitigation" is defined as "sustained action taken to reduce or eliminate the long-term risk to human life and property from natural, human-caused, and technological hazards and their effects." - [more](#)

The updated local hazard mitigation plan will be an annex to the regional plan "Taming Natural Disasters: Multi-Jurisdictional Local Hazard Mitigation Plan for the San Francisco Bay Area". The current plan may be viewed at: <http://quake.abag.ca.gov/mitigation/>.

If you have any questions regarding the survey or opportunities to participate in the plan update, you may contact Corinne Bartshire at (510) 834-3326 or [cbartshire@dewberry.com](mailto:cbartshire@dewberry.com).

Thank you for taking the time to help our community become more resilient.

**Environmental Initial Study  
400 Main Street Mixed Use Commercial Development**

Public Review Period:

## What is Hazard Mitigation?

Hazard mitigation is "*any action taken to reduce or eliminate the long-term risk to human life and property from natural hazards*"<sup>1</sup>. In California this definition has been expanded to include both natural and man-made hazards.

We understand that hazard events will continue to occur, and at their worst can result in death and destruction of property and infrastructure. The work done to minimize the impact of hazard events to life and property is called Hazard Mitigation. Often, these damaging events occur in the same locations over time (i.e. flooding along rivers), and cause repeated damage. Because of this, Hazard Mitigation is often focused on reducing repetitive loss, thereby breaking the disaster cycle.

The essential steps of Hazard Mitigation are:

1. Hazard identification
2. Vulnerability analysis
3. Defining a hazard mitigation strategy
4. Implementation of hazard mitigation activities and projects

### 1. Hazard Identification

First we must discover the location, potential extent, and expected severity of hazards. Hazard information is often presented in the form of a map or as digital data that can be used for further analysis. It is important to remember that many hazards are not easily identified, for example, many earthquake faults lie hidden below the earth's surface.

### 2. Vulnerability Analysis

Once hazards have been identified, the next step is to determine who and what would be at risk if the hazard event occurs. Natural events such as earthquakes, floods, and fires are only called disasters when there is loss of life or destruction of property. For example, the magnitude 7.9 Denali, AK earthquake in 2002 did far less damage than the magnitude 6.7 Northridge, CA earthquake in 1994 because there were few people and buildings in the areas shaken by the Alaskan quake.

### 3. Defining a Hazard Mitigation Strategy

Once we know where the hazards are, and who or what could be affected by a disaster, we have to strategize about what to do to prevent a disaster from occurring or to minimize the effects if it does occur. The end result should be a Hazard Mitigation plan that identifies long-term strategies that may include planning, policy changes, programs, projects and other activities, as well as how to implement them. Hazard Mitigation plans should be done at every level including individuals, businesses, state, local, and federal governments.

### 4. Hazard Mitigation Activities and Projects

Once the Hazard Mitigation plans and strategies are developed, they must be followed for any change in the disaster cycle to occur. Hazard mitigation activities are meant to be permanent or long-term fixes and include a number of options such as:

- Land-use planning and regulation of development in hazard zones such as floodplains and wildland-urban interface areas.



- Development and enforcement of building codes - The Seismic Safety Commission has identified stringent building codes and standards as the primary reason why California has suffered relatively low damages during hazard events.
- Retrofitting structures – this can include activities such as seismic retrofits to reduce damage from earthquakes, elevating buildings in flood-prone areas, and reroofing with fire-resistant shingles.
- Removing structures from hazardous areas.

There are many other types of mitigation activities that can be done by individuals, businesses, and government. You can be part of the solution to break the disaster cycle by being aware of the hazards that may affect you and your community and becoming active in your community's hazard mitigation planning process.

<sup>1</sup> As defined in 44 Code of Federal Regulations (CFR), Subpart M, Section 206.401.

Clara County Fire Department Chief Kenneth Waldvogel for providing leadership and service to the community since 1978 and honored him with a plaque upon his retirement.



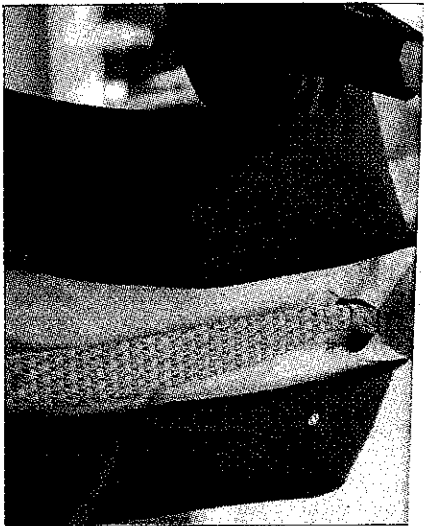
Waldvogel

Waldvogel started in the ranks as firefighter/engineer and held several positions, including fire inspector, fire prevention supervisor, fire captain, battalion chief, deputy chief of operations, deputy chief of training and assistant fire chief, before being appointed county fire chief in 2007. Waldvogel earned National Fire Academy certification as an Executive Fire Officer in 2008 and graduated from the 21st Century Leadership Academy.

"Your list of accomplishments is impressive," Mayor Ron Packard said as he presented Waldvogel with the plaque.

"I'm so proud of our organization and of our relationship with Los Altos," Waldvogel said.

Waldvogel's replacement has not been named.



PHOTOS BY ELLIOTT BURR/TOWN CRITER  
Los Altos Hills City Councilmen Gary Waldeck, above left, and John Radford, above right, took the oath of office Thursday. They replace Breene Kerr and Dean Warshawsky, left, who were termed-out after eight years. Ginger Summitt is the town's new mayor.

## City seeks residents' input on disaster preparedness

Town Crier Report

The city of Los Altos is soliciting input on disaster planning. The goal is to prepare and equip residents in advance of a significant hazardous event. An online survey is available on the city's Web site through Jan. 15.

According to the federal government's Disaster Mitigation Act of 2000, all state and local governments — cities, counties and special districts — are required

to develop comprehensive local hazard mitigation plans as a condition for federal funding in the event of natural or man-made disasters.

Los Altos, like many other cities in Santa Clara County, does not have a current state-approved Hazard Mitigation Plan, according to a report by Police Chief Thuk Younis. A collaborative effort with other participating cities is under way to draft the 2010 Santa Clara County Hazard Mitigation Plan, which will be an an-

nex to the regional Bay Area plan, he said.

Although the plan is in its preliminary stage, it's important to begin gathering feedback from residents on disaster planning, Younis said.

The city council must approve the plans before submitting them to the Santa Clara County Local Planning Team for inclusion, scheduled in the first half of 2011, Younis said.

For more information, visit [www.losaltosca.gov](http://www.losaltosca.gov).

**A** 10 unanimously overturned the conviction of a Los Altos man accused of misrepresenting his software company's revenue for several years.

The U.S. Court of Appeals for the 9th Circuit, in a 3-0 ruling, reversed 15 counts of securities fraud against Prabhakar Goyal, former chief financial officer of Network Associates Inc. (previously McAfee Inc.), citing that the prosecution did not provide sufficient evidence to prove Goyal guilty.

The U.S. Department of Justice in 2007 charged Goyal and a jury found him guilty of inflating revenue figures artificially by prematurely stating sales before customers actually purchased the product, a method termed "sell-in" accounting.

But the appeals court ruled that the prosecution did not sufficiently prove that Goyal violated accounting rules to materially affect revenue.

"This is just one of a string of recent cases in which courts have found that federal prosecutors overreached by trying to stretch criminal law beyond its proper bounds," Chief Judge Alex Kozinski wrote in a concurrence.

A spokesman for the U.S. Attorney's Office said the department is reviewing the decision but couldn't comment further.

Contact Elliott Burr at [elliottb@latc.com](mailto:elliottb@latc.com).



## CITY OF LOS ALTOS POLICE DEPARTMENT

ONE NORTH SAN ANTONIO ROAD LOS ALTOS, CALIFORNIA 94022  
PHONE (650) 947-2770 FAX (650) 947-2704

---

### **\*\*PRESS RELEASE\*\***

#### **Announcing the release of the Review Draft for the Santa Clara County Local Hazard Mitigation Plan and the City of Los Altos Annex**

Is your home or office building susceptible to damage from earthquakes, wildfires, floods, or utility service interruption? Do you want to help increase the likelihood that you can recover from disasters and prevent future damage from these and other natural hazards?

Public review and comment is being solicited for the Review Draft of the Santa Clara County Local Hazard Mitigation Plan 2011 Update. This plan is currently under review by the California Emergency Management Agency (Cal EMA) and the Federal Emergency Management Agency (FEMA) to ensure compliance with the Federal Disaster Mitigation Act of 2000 allowing the County and participating cities to maintain eligibility to receive federal mitigation grant funding. The City of Los Altos has participated in this planning process and developed an annex to this plan detailing the City's specific hazard risks and approaches to increase resiliency.

PDF versions for the Santa Clara County LHMP and the Los Altos Annex draft may be reviewed or downloaded [from http://www.sccgov.org/portal/site/oes/](http://www.sccgov.org/portal/site/oes/) by clicking on the LHMP link in the left column.

With a grant from the Federal Emergency Management Agency (FEMA), the Santa Clara County Office of Emergency Services has coordinated with the incorporated cities to update the county's Hazard Mitigation Plan. The planning process has involved thirteen incorporated cities, the Santa Clara Valley Water District, and major employers in Silicon Valley. The 2011 updated local hazard mitigation plan is an annex to the regional plan titled "*Taming Natural Disasters: Multi-Jurisdictional Local Hazard Mitigation Plan for the San Francisco Bay Area*" which may be viewed at: <http://quake.abag.ca.gov/mitigation/>.

The Santa Clara County Local Hazard Mitigation Plan 2011 Update is being coordinated by the Santa Clara County Office of Emergency Services. If you have any questions or wish to comment on the Santa Clara County LHMP or Los Altos annex, please contact the County's consultant: Corinne Bartshire at [cbartshire@dewberry.com](mailto:cbartshire@dewberry.com) or 415.295.7116.



## LOS ALTOS POLICE DEPARTMENT

---

April 19, 2011

Dear Community Member,

On behalf of the Los Altos Police Department, I am pleased to invite you to review or download the Public Review Draft of the **2011 Santa Clara County Hazard Mitigation Plan Update and the City of Los Altos Annex**. Input from you or your organization will be invaluable to increasing disaster resiliency in our community.

PDF versions for the Santa Clara County Hazard Mitigation Plan and the City of Los Altos annex can be accessed at the following link:

<http://www.sccgov.org/portal/site/oes/agencychp?path=%2Fv7%2FEmergency%20Services%2C%20Office%20of%20%28DEP%29%2FLHMP>

The review draft has been submitted to the California Emergency Management Agency (Cal EMA) and is undergoing review for compliance with the Federal Disaster Mitigation Act of 2000. Upon receiving Cal EMA & the Federal Emergency Management Agency's (FEMA's) comments we will prepare a final plan update for adoption by the City Council. At this time, we welcome comments from interested agencies and the general public.

If you have any questions or wish to comment on either the Santa Clara County LHMP or the City of Los Altos annex, please contact the County's consultant: Corinne Bartshire at [cbartshire@dewberry.com](mailto:cbartshire@dewberry.com) or (415) 295-7116. **Comments submitted before May 31, 2011 will be reviewed and integrated into the final plan for adoption, as appropriate.** Comments submitted after that date will be recorded for future updates to the plan.

Please take a moment to visit the Santa Clara County Office of Emergency Services website at <http://www.sccgov.org/portal/site/oes/>. This plan is a countywide plan developed in partnership with 13 participating cities and representatives from the private sector. It will be added to the regional plan titled "Taming Natural Disasters: Multi-Jurisdictional Local Hazard Mitigation Plan for the San Francisco Bay Area" which may be viewed at <http://quake.abag.ca.gov/mitigation/>.

The purpose of the plan is to identify hazard threats to Santa Clara County and prioritize methods for reducing risks of future damage through specific mitigation actions. Preparation of this plan with approval from the California Emergency Management Agency (Cal EMA) and Federal Emergency Management Agency (FEMA) enables the County and participating jurisdictions to apply for mitigation grant funds per the Disaster Mitigation Act of 2000. You can read more information about this program and mitigation grant funding on the Cal EMA Hazard Mitigation Portal (<http://hazardmitigation.calema.ca.gov/>).

*Please forward this message to fellow residents and community members of the City of Los Altos. We sincerely appreciate your time and cooperation in helping our community become more resilient.*

***Thank you for your participation!***

## Bartshire, Corinne

---

**From:** Matt Hartley [MHartley@losaltosca.gov]  
**Sent:** Thursday, April 21, 2011 4:32 PM  
**To:** julie@losaltoschamber.org; msmith@calwater.com; LSALTOSCROOK@aol.com; vccarpenter@gmail.com; californiaandrea@comcast.net; lisa.towell@yahoo.com; BCPandMore@gmail.com  
**Cc:** Bartshire, Corinne  
**Subject:** email distribution  
**Attachments:** Hazard Mitigation Email final PDF 4-19-2011.pdf; Draft hazard mitigation email 4-19-2011.doc

Community members,

You have expressed an interest in receiving email information regarding the updating of the Los Altos Hazard Mitigation Plan and the County of Santa Clara Plan. Attached are a PDF version and a Microsoft Word version that will allow you to link to the new updates and drafts that have been sent to the California Emergency Management Agency and the Federal Emergency Management Agency. Should you have any questions or comments, you may respond via the attached links.

Thank you,

Matthew Hartley, Sergeant  
Los Altos Police Department  
1. North San Antonio Road  
650-947-2801

Home

I Want To...

Resident

Business

Visitor

City Departments



Los Altos Police

- [Police Home](#)
- [Inside LAPD](#)
- 
- [Organization](#)
- [AccuWeather.com®](#)
- [Applications and Forms](#)
- [Hourly Info | 15 Days](#)
- [Emergency Preparedness](#)
- [Los Altos Muni Code](#)
- [Contact Information](#)
- [Police Use Only](#)

Weather Forecast | Weather Maps

**NEW!** City of Los Altos Local Hazard Mitigation Plan 2011 Update Available for Public Review and Comment

The City of Los Altos has participated with Santa Clara County in updating its Local Hazard Mitigation Plan. This plan is an annex to the Association of Bay Area Governments (ABAG) Regional Hazard Mitigation Plan. PDF versions for the Los Altos annex and the Santa Clara County LHMP may be reviewed or downloaded from the following link: [www.sccgov.org](http://www.sccgov.org)

If you have any questions or wish to comment on either the Santa Clara County LHMP or the City of Los Altos annex, please contact the County's consultant: Corinne Bartshire at 415-295-7116 or [cbartshire@dewberry.com](mailto:cbartshire@dewberry.com).

Public comments received prior to May 31, 2011 will be reviewed and integrated into the final plan for adoption, as appropriate. Comments submitted after that date will be recorded for future updates to the plan.

With a grant from the Federal Emergency Management Agency (FEMA), the Santa Clara County Office of Emergency Services has coordinated with the incorporated cities to develop this update. The planning process has involved thirteen incorporated cities, the Santa Clara Valley Water District, and major employers in Silicon Valley. The 2011 updated local hazard mitigation plan is an annex to the regional plan titled "Taming Natural Disasters: Multi-Jurisdictional Local Hazard Mitigation Plan for the San Francisco Bay Area" which may be viewed at: <http://quake.abag.ca.gov/>

### 13.7.2 Los Altos Attachment 2: Los Altos Strategies 2010

The City of Los Altos participated in ABAG's revision of the regional strategies for development of this annex. Appendix G of Taming Natural Hazards presents a summary list of mitigation strategies with regional priorities and the hazards mitigated. The City ranked those strategies in a spreadsheet provided by ABAG. This is a summary of those rankings.

Mitigation Strategies Identified for Los Altos

JURISDICTION: Los Altos

Strategy	Priority	Responsible Agency or Department	Comments
<a href="#">ECON-a-1</a>	Existing	Community Development Dept	
<a href="#">ECON-a-2</a>	n/a		
<a href="#">ECON-b-1</a>	Existing		
<a href="#">ECON-b-2</a>	Existing		
<a href="#">ECON-b-3</a>	n/a		
<a href="#">ECON-b-4</a>	Existing Underfunded	Building Division	Surveys Building Dept
<a href="#">ECON-b-5</a>	NYC		
<a href="#">ECON-b-6</a>	n/a		
<a href="#">ECON-b-7</a>	n/a		
<a href="#">ECON-b-8</a>	n/a		
<a href="#">ECON-b-9</a>	Existing	Engineering / Planning / If plans submitted	
<a href="#">ECON-c-1</a>	Existing		City has no unreinforced Masonry
<a href="#">ECON-c-2</a>	n/a		
<a href="#">ECON-c-3</a>	Existing Underfunded		
<a href="#">ECON-c-4</a>	Existing		
<a href="#">ECON-d-1</a>	Existing Underfunded		
<a href="#">ECON-d-2</a>	Existing		
<a href="#">ECON-d-3</a>	n/a		
<a href="#">ECON-e-1</a>	Existing	Santa Clara County Fire / Los Altos Public Works	
<a href="#">ECON-e-2</a>	NYC		
<a href="#">ECON-e-3</a>	NYC		
<a href="#">ECON-e-4</a>	Existing		Title 12 LAMC
<a href="#">ECON-e-5</a>	Existing	BUILDING DEPT	2007 CBC
<a href="#">ECON-e-6</a>	Existing Underfunded	Central Fire	Minimal Exposure
<a href="#">ECON-e-7</a>	Existing Underfunded	Central Fire	
<a href="#">ECON-e-8</a>	NYC	Central Fire	No current funding
<a href="#">ECON-e-9</a>	n/a		City does not have high-rise or high occupancy buildings of this nature
<a href="#">ECON-e-10</a>	Existing		Los Altos Central Fire
<a href="#">ECON-e-11</a>	NYC		
<a href="#">ECON-e-12</a>	Existing	Public Works Santa Clara County Water District	
<a href="#">ECON-e-13</a>	n/a		
<a href="#">ECON-f-1</a>	Existing	Los Altos Community Development	
<a href="#">ECON-f-2</a>	Existing	LOS ALTOS PLANNING DEPT	LAMC CODE TITLE 12
<a href="#">ECON-f-3</a>	Existing	LOS ALTOS PLANNING DEPT	
<a href="#">ECON-f-4</a>	Existing	City of Los Altos PUBLIC WORKS	
<a href="#">ECON-f-5</a>	Existing	City of Los Altos PUBLIC WORKS / City website	



Mitigation Strategies Identified for Los Altos

<a href="#">ECON-f-6</a>	Existing	City of Los Altos Planning Dept	LAMC CODE TITLE 12
<a href="#">ECON-f-7</a>	NYC		
<a href="#">ECON-f-8</a>	NYC		
<a href="#">ECON-f-9</a>	Existing		Same as regional approach
<a href="#">ECON-g-1</a>	Existing	City of Los Altos Building and Planning Departments	Standard Operating Procedure
<a href="#">ECON-g-2</a>	Existing Underfunded	City of Los Altos Building and Planning Departments	SOP
<a href="#">ECON-h-1</a>	Existing	City of Los Altos Building and Planning Departments	2007 CBC
<a href="#">ECON-h-2</a>	Existing		
<a href="#">ECON-h-3</a>	Existing Underfunded	Santa Clara County Fire Department / Community Development CDD	
<a href="#">ECON-i-1</a>	Existing Underfunded	Los Altos Building Department / Office of Emergency Services	SAP Program
<a href="#">ECON-i-2</a>	NYC		
<a href="#">ECON-i-3</a>	Existing Underfunded		
<a href="#">ECON-i-4</a>	Existing Underfunded		
<a href="#">ECON-i-5</a>	Under Study	Community Development Dept	
<a href="#">ECON-i-6</a>	n/a		
<a href="#">ECON-j-1</a>	Existing	City of Los Altos Website	
<a href="#">ECON-j-2</a>	Existing Underfunded	Los Altos Police Department / City of Los Altos Website	
<a href="#">ECON-j-3</a>	NYC		
<a href="#">ECON-j-4</a>	n/a		
<a href="#">ECON-j-5</a>	n/a		NO CERT PROGRAM
<a href="#">ECON-j-6</a>	n/a		
<a href="#">ECON-j-7</a>	Existing	City of Los Altos Website	
<a href="#">ECON-j-8</a>	NYC		
<a href="#">ECON-j-9</a>	n/a		
<a href="#">ECON-j-10</a>	n/a		
<a href="#">ECON-j-11</a>	n/a		
<a href="#">ECON-j-12</a>	n/a		
<a href="#">ECON-j-13</a>	Existing	City of Los Altos Website	
<a href="#">EDUC-a-1</a>	n/a	Los Altos/ Mountain View School Districts	The City is a separate entity from the school districts.
<a href="#">EDUC-a-2</a>	Existing Underfunded		Los Altos Schools have been recently remodeled
<a href="#">EDUC-a-3</a>	n/a		The City is a separate entity from the school districts.
<a href="#">EDUC-a-4</a>	n/a		N/A
<a href="#">EDUC-a-5</a>	n/a		
<a href="#">EDUC-a-6</a>	n/a		
<a href="#">EDUC-b-1</a>	n/a		
<a href="#">EDUC-b-2</a>	n/a		
<a href="#">EDUC-b-3</a>	n/a		

Mitigation Strategies Identified for Los Altos

<a href="#">EDUC-c-1</a>	n/a		
<a href="#">EDUC-c-2</a>	n/a	Santa Clara County Fire Department	
<a href="#">EDUC-c-3</a>	n/a		No Cert Program locally
<a href="#">EDUC-c-4</a>	n/a		
<a href="#">EDUC-c-5</a>	n/a		
<a href="#">EDUC-c-6</a>	n/a		
<a href="#">EDUC-c-7</a>	n/a		
<a href="#">EDUC-d-1</a>	n/a	City maintains informational website for residents / school children living within city boundaries.	
<a href="#">EDUC-d-2</a>	n/a		
<a href="#">ENVI-a-1</a>	Existing	Community Development Dept	General Plan
<a href="#">ENVI-a-2</a>	Existing	Community Development Dept / Police Dept. / Santa Clara County Fire	
<a href="#">ENVI-a-3</a>	Existing	Community Development Department	State Code / General Plan
<a href="#">ENVI-a-4</a>	Under Study	Santa Clara Calley Water District	
<a href="#">ENVI-a-5</a>	Existing	Santa Clara Calley Water District	
<a href="#">ENVI-a-6</a>	Existing		Santa Clara Valley Urban Run-off Pollution Prevention Program (SCVURPPP)
<a href="#">ENVI-a-7</a>	Existing	Public Works Community Development Dept	Santa Clara Valley Urban Run-off Pollution Prevention Program (SCVURPPP)
<a href="#">ENVI-a-8</a>	Existing		Chatper 12.60 LAMC
<a href="#">ENVI-a-9</a>	Existing	Community Development Dept / Santa Clara County Fire	
<a href="#">ENVI-a-10</a>	Existing	Santa Clara County Household Hazardous waste/ City of Los Altos	Santa Clara Valley Urban Run-off Pollution Prevention Program (SCVURPPP)
<a href="#">ENVI-a-11</a>	Existing		
<a href="#">ENVI-a-12</a>	Existing Underfunded	Santa Clara Valley Water District/ City of Los Altos	Chapter 11.02 LAMC
<a href="#">ENVI-a-13</a>	NYC/blank	Santa Clara Valley Water District/ City of Los Altos	General Plan
<a href="#">ENVI-b-1</a>	Existing	City of Los Altos Planning Dept. / City Administration	
<a href="#">ENVI-b-2</a>	Existing Underfunded	City of Los Altos	ICLEI Report Risk Mgr.
<a href="#">ENVI-b-3</a>	Existing Underfunded	Community Development CDD	Downtown Urban Design plan
<a href="#">ENVI-b-4</a>	Existing Underfunded	City of Los Altos Bicycle / Ped plan Traffic Commission	General Plan
<a href="#">ENVI-b-5</a>	NYC		
<a href="#">ENVI-b-6</a>	Existing Underfunded	Community Development CDD	Ch. 12.66 LAMC Gen Pln
<a href="#">ENVI-b-7</a>	Existing Underfunded	Los Altos Finance Dept	
<a href="#">ENVI-b-8</a>	NYC/blank	Los Altos Building Dept	
<a href="#">ENVI-b-9</a>	Existing Underfunded		Standard Operation Proc
<a href="#">ENVI-b-10</a>	Existing Underfunded	City of Palo Alto	

Mitigation Strategies Identified for Los Altos

<a href="#">ENVI-b-11</a>	NYC/blank	City of Los Altos	General Plan
<a href="#">ENVI-b-12</a>	Existing Underfunded	City of Los Altos Planning Dept.	
<a href="#">ENVI-b-13</a>	NYC/blank	City of Los Altos Administration	City website / News letter
<a href="#">ENVI-c-1</a>	n/a		
<a href="#">ENVI-c-2</a>	n/a		
<a href="#">ENVI-c-3</a>	n/a		
<a href="#">GOVT-a-1</a>	Existing Underfunded	City Manager's Office / Building / Planning	
<a href="#">GOVT-a-2</a>	Existing Underfunded		
<a href="#">GOVT-a-3</a>	Existing	City Administration / Police Department/ Municipal Services /	
<a href="#">GOVT-a-4</a>	Existing Underfunded	Information Technology/ Emergency Prep/ Administration	
<a href="#">GOVT-a-5</a>	Existing		
<a href="#">GOVT-a-6</a>	n/a		
<a href="#">GOVT-a-7</a>	n/a		
<a href="#">GOVT-a-8</a>	n/a		
<a href="#">GOVT-a-9</a>	Existing	Building and Planning Community Development	
<a href="#">GOVT-a-10</a>	Existing	City of Los Altos Building and Planning Department	
<a href="#">GOVT-a-11</a>	Existing	City of Los Altos Building and Planning Department	
<a href="#">GOVT-a-12</a>	n/a		
<a href="#">GOVT-a-13</a>	NYC/blank		
<a href="#">GOVT-b-1</a>	Existing Underfunded		
<a href="#">GOVT-b-2</a>	Existing	Los Altos Police Department / City Administration	
<a href="#">GOVT-b-3</a>	Existing Underfunded	Information Technology Division & Emergency Preparedness Coordinator	
<a href="#">GOVT-b-4</a>	Existing Underfunded	Emergency Operations Plan / EOC plan	
<a href="#">GOVT-b-5</a>	NYC/blank		
<a href="#">GOVT-c-1</a>	Existing	Santa Clara County Emergency Services	
<a href="#">GOVT-c-2</a>	n/a		City no longer maintains
<a href="#">GOVT-c-3</a>	Existing	Los Altos General Plan	
<a href="#">GOVT-c-4</a>	Existing		
<a href="#">GOVT-c-5</a>	Existing Underfunded	PPE Equipment purchased/ under EPREP Grant/ Santa Clara County OES	EMPG Grant assisted
<a href="#">GOVT-c-6</a>	Existing Underfunded	Los Altos Information Technology Dept / Los Altos Police Department Services Manager / County Wide / State wide prep	
<a href="#">GOVT-c-7</a>	Existing Underfunded		
<a href="#">GOVT-c-8</a>	n/a		
<a href="#">GOVT-c-9</a>	Existing	Completed EOC center 2009	

Mitigation Strategies Identified for Los Altos

<a href="#">GOVT-c-10</a>	Existing Underfunded	EMA / Santa Clara County / Los Altos Police Department/ Santa Clara County Fire Department	
<a href="#">GOVT-c-11</a>	Existing	Santa Clara County Fire Department / Los Altos Police Department	
<a href="#">GOVT-c-12</a>	Existing		
<a href="#">GOVT-c-13</a>	Existing Underfunded	Los Altos Police Department	New Phone System call back (Alert SCC)
<a href="#">GOVT-c-14</a>	Existing Underfunded	Los Altos Police Department	
<a href="#">GOVT-c-15</a>	NYC		
<a href="#">GOVT-c-16</a>	Existing		
<a href="#">GOVT-c-17</a>	Existing		
<a href="#">GOVT-c-18</a>	Existing Underfunded	County Fire	
<a href="#">GOVT-c-19</a>	NYC		
<a href="#">GOVT-c-20</a>	n/a		
<a href="#">GOVT-c-21</a>	n/a		Not below a dam
<a href="#">GOVT-c-22</a>	n/a		
<a href="#">GOVT-c-23</a>	n/a		
<a href="#">GOVT-c-24</a>	Existing Underfunded	Los Altos Police Department	
<a href="#">GOVT-c-25</a>	NYC/blank		
<a href="#">GOVT-d-1</a>	Existing		
<a href="#">GOVT-d-2</a>	Very High		
<a href="#">GOVT-d-3</a>	Existing		
<a href="#">GOVT-d-4</a>	Existing		
<a href="#">GOVT-d-5</a>	Existing Underfunded	Fire Protection District / Santa Clara County Fire Department	
<a href="#">GOVT-d-6</a>	Existing	Santa Clara County Fire Department	
<a href="#">GOVT-d-7</a>	Existing	Los Altos Building Department / Planning Department	
<a href="#">GOVT-d-8</a>	Existing Underfunded	Los Altos Administration	
<a href="#">GOVT-d-9</a>	n/a		
<a href="#">GOVT-d-10</a>	NYC/blank		
<a href="#">GOVT-e-1</a>	Existing Underfunded	ABAG	
<a href="#">GOVT-e-2</a>	NYC/blank		
<a href="#">HEAL-a-1</a>	Existing Underfunded	COMMUNITY DEVELOPEMNT DEPARTMENT / CDD / PLANNING	
<a href="#">HEAL-a-2</a>	n/a	Reference Public Health Department	Los Altos does not maintain a hospital within the city.
<a href="#">HEAL-a-3</a>	Existing	Santa Clara County Public Health Dept.	
<a href="#">HEAL-a-4</a>	Existing	Santa Clara County Public Health Dept.	
<a href="#">HEAL-a-5</a>	Existing Underfunded		
<a href="#">HEAL-a-6</a>	Existing Underfunded	Santa Clar County Public Health Dept	
<a href="#">HEAL-a-7</a>	Existing	Los Altos Police Department / Santa Clara County Fire/ Santa Clara County EMA	City maintains resource information on city website. Other printed materials on site.

## Mitigation Strategies Identified for Los Altos

<a href="#">HEAL-b-1</a>	High		
<a href="#">HEAL-b-2</a>	High		
<a href="#">HEAL-b-3</a>	High		
<a href="#">HEAL-c-1</a>	Existing	Los Altos Police Department/ Santa Clara County Health Dept	City has designated POD site locations identified and pre planned for Distribution
<a href="#">HEAL-c-2</a>	Existing	Santa Clara County OES/ Santa Clara County Public Health	
<a href="#">HEAL-c-3</a>	Existing	Santa Clara County OES/ Santa Clara County Public Health	
<a href="#">HEAL-c-4</a>	Existing	Santa Clara County Health Dept / Santa Clara County Fire Department	
<a href="#">HEAL-c-5</a>	Existing	Santa Clara County Health Department	
<a href="#">HEAL-c-6</a>	NYC/blank		
<a href="#">HSNG-a-1</a>	Existing	Community Development Dept CDD	Chapter 1260 LAMC
<a href="#">HSNG-a-2</a>	Existing Underfunded	Community Development Dept CDD	General Plan LAMC CH. 12.44
<a href="#">HSNG-a-3</a>	Existing	Recreation Dept/ Police Dept/	
<a href="#">HSNG-a-4</a>	n/a		
<a href="#">HSNG-b-1</a>	Existing Underfunded	Community Development Dept / CDD	Title 12 LAMC
<a href="#">HSNG-b-2</a>	Existing	Community Development Dept / CDD	Title 12 LAMC
<a href="#">HSNG-b-3</a>	Existing	Community Development Dept / CDD	Title 12 LAMC
<a href="#">HSNG-b-4</a>	Existing	Community Development Dept / CDD	Title 12 LAMC
<a href="#">HSNG-b-5</a>	Existing	Community Development Dept / CDD	General Plan
<a href="#">HSNG-b-6</a>	Moderate	Community Development Dept / CDD	Informational
<a href="#">HSNG-b-7</a>	n/a		
<a href="#">HSNG-b-8</a>	n/a		
<a href="#">HSNG-b-9</a>	Existing Underfunded		The City is in agreement with this strategy but does not have a role in the implementation
<a href="#">HSNG-c-1</a>	Existing	Community Development Dept CDD	
<a href="#">HSNG-c-2</a>	Existing	Community Development Dept CDD	Title 12 LAMC
<a href="#">HSNG-c-3</a>	n/a		
<a href="#">HSNG-c-4</a>	Existing Underfunded	Communit Development CDD	Building Official Surveys
<a href="#">HSNG-c-5</a>	n/a		
<a href="#">HSNG-c-6</a>	n/a		
<a href="#">HSNG-c-7</a>	n/a		
<a href="#">HSNG-c-8</a>	n/a		
<a href="#">HSNG-c-9</a>	Under Study	Community Development Dept	
<a href="#">HSNG-d-1</a>	Existing	Community Development Dept	Building Official Surveys
<a href="#">HSNG-d-2</a>	n/a		
<a href="#">HSNG-d-3</a>	NYC	Community Development Dept	
<a href="#">HSNG-d-4</a>	NYC	Community Development Dept	
<a href="#">HSNG-e-1</a>	n/a		No Mobile homes within city boundaries

## Mitigation Strategies Identified for Los Altos

<a href="#">HSNG-e-2</a>	n/a		This category does not exist
<a href="#">HSNG-e-3</a>	Existing	Community Development CDD Los Altos Building Dept.	General Plan / 2007 Building codes
<a href="#">HSNG-e-4</a>	Existing Underfunded		General Plan
<a href="#">HSNG-f-1</a>	Existing	Community Development CDD	Title 12 LAMC/ 2007 Building code
<a href="#">HSNG-f-2</a>	Existing	Community Development CDD	
<a href="#">HSNG-g-1</a>	Existing	Santa Clara County Fire Dept	General Plan
<a href="#">HSNG-g-2</a>	n/a		
<a href="#">HSNG-g-3</a>	Existing		
<a href="#">HSNG-g-4</a>	n/a		
<a href="#">HSNG-g-5</a>	n/a	Community Development Dept CDD	
<a href="#">HSNG-g-6</a>	Existing	Community Development Dept CDD / Santa Clara County Fire Dept	2007 Building / Fire Codes
<a href="#">HSNG-g-7</a>	Existing	Community Development / CDD / Santa Clara County Fire Dept	
<a href="#">HSNG-g-8</a>	Existing Underfunded	Santa Clara County Fire Department / Santa Clara Valley Water District / Cal Water	
<a href="#">HSNG-g-9</a>	Existing Underfunded	Santa Clara County Fire Department	
<a href="#">HSNG-g-10</a>	Existing Underfunded	Santa Clara County Fire Department	
<a href="#">HSNG-g-11</a>	Existing Underfunded	Santa Clara County Fire Department	
<a href="#">HSNG-g-12</a>	n/a		
<a href="#">HSNG-g-13</a>	Existing	Community Development SCC Fire Department	
<a href="#">HSNG-g-14</a>	Existing	Community Development SCC Fire Department	
<a href="#">HSNG-g-15</a>	n/a	Not Applicable	
<a href="#">HSNG-g-16</a>	Existing	Santa Clara County Fire Department	
<a href="#">HSNG-g-17</a>	Existing Underfunded	Santa Clara County Fire Department / Santa Clara Valley Water District	
<a href="#">HSNG-g-18</a>	Existing	Community Development Building Department / 2007 Building and Fire Code	
<a href="#">HSNG-g-19</a>	Moderate	Community Development / Santa Clara County Fire Department / PG&E	
<a href="#">HSNG-g-20</a>	NYC/blank		
<a href="#">HSNG-h-1</a>	NYC/blank		
<a href="#">HSNG-h-2</a>	Existing	Community Development Department CDD	12.60 LAMC
<a href="#">HSNG-h-3</a>	Existing	Community Development Department CDD	12.60 LAMC
<a href="#">HSNG-h-4</a>	Existing	Community Development Department CDD	Chapter 10.16 LAMC NPDES Permit
<a href="#">HSNG-h-5</a>	Existing	Public Works / Engineering	General Plan
<a href="#">HSNG-h-6</a>	Existing	Police Department / Engineering / Public Works	

Mitigation Strategies Identified for Los Altos

<a href="#">HSNG-h-7</a>	Existing	Communitiy Development Department CDD	12.60 LAMC
<a href="#">HSNG-h-8</a>	Existing	Communitiy Development Department CDD/Public Works	General Plan
<a href="#">HSNG-h-9</a>	Existing	Communitiy Development Department CDD	General Plan
<a href="#">HSNG-h-10</a>	Moderate	Communitiy Development Department CDD	Same as Regional priority
<a href="#">HSNG-i-1</a>	NYC/blank		
<a href="#">HSNG-i-2</a>	Existing	Los Altos Planning Department / Public Works	
<a href="#">HSNG-j-1</a>	NYC/blank		
<a href="#">HSNG-j-2</a>	Existing	Community Develoment Dept	Same as regional priority
<a href="#">HSNG-k-1</a>	NYC/blank		
<a href="#">HSNG-k-2</a>	Existing	City website / Community Development	
<a href="#">HSNG-k-3</a>	Existing Underfunded	City website / Community Development/ Emergency Preparation guidelines Citizen Corps Council	
<a href="#">HSNG-k-4</a>	n/a		
<a href="#">HSNG-k-5</a>	NYC		
<a href="#">HSNG-k-6</a>	Existing	County / Sate Emergency Prep	City no longer maintains CERT PROGRAM
<a href="#">HSNG-k-7</a>	n/a	American Red Cross Citizen Corps	
<a href="#">HSNG-k-8</a>	n/a		
<a href="#">HSNG-k-9</a>	Existing Underfunded	Crime Prevention Block Captains/ Los Altos Police Department	
<a href="#">HSNG-k-10</a>	NYC		
<a href="#">HSNG-k-11</a>	Existing	Disaster Preparation / City Website / Citizen Corps / Santa Clara County Fire	
<a href="#">HSNG-k-12</a>	Moderate	Provision to HAM operators / Assist / Emergency Mgmt.	
<a href="#">HSNG-k-13</a>	Existing	Los Altos Planning Dept	City website referral
<a href="#">HSNG-k-14</a>	NYC		
<a href="#">HSNG-k-15</a>	n/a		
<a href="#">HSNG-k-16</a>	n/a		City of Los Altos has no shoreline properties
<a href="#">INFR-a-1</a>	Existing Underfunded	Publice Works (MSC)	Recognize / Not lead in Strategy
<a href="#">INFR-a-2</a>	n/a		Los Altos is not a Dam owner
<a href="#">INFR-a-3</a>	Existing	Police Dept / Municipal Service / City Administration	
<a href="#">INFR-a-4</a>	Existing Underfunded	City Administration / Municipal Services / Planning Dept	Underfunded
<a href="#">INFR-a-5</a>	Existing	County Transportation support	

Mitigation Strategies Identified for Los Altos

<a href="#">INFR-a-6</a>	Existing		Los Altos and Palo Alto RWCP Partners meet regularly re waste water issues
<a href="#">INFR-a-7</a>	Existing	City of Los Altos Planning Dept, Public Works Dept.	
<a href="#">INFR-a-8</a>	Existing Underfunded	In Place City of Los Altos PD/ MSC to operate critical facility needs	
<a href="#">INFR-a-9</a>	NYC		
<a href="#">INFR-a-10</a>	Existing Underfunded	Refurbished local pedestrian pathway bridges bordering city	
<a href="#">INFR-a-11</a>	Existing Underfunded	Critical backup generators in place Police and MSC	
<a href="#">INFR-a-12</a>	Under Study	Los Altos Planning Department	
<a href="#">INFR-a-13</a>	n/a		Not a Dam Owner
<a href="#">INFR-a-14</a>	Existing	Los Altos PD / EOC / Part of SCC EMA	
<a href="#">INFR-a-15</a>	Existing	Los Altos Police Department Santa Clara County Fire	Standard Operating procedures
<a href="#">INFR-a-16</a>	Existing	City Cooling Centers/ Police Department policy/Communications via County of Santa Clara City provides cooling centers	
<a href="#">INFR-a-17</a>	Existing	MTC	
<a href="#">INFR-a-18</a>	Existing Underfunded	Santa Clara County office of Emergency Services / Emergency Mgrs / Los Altos Police Department	
<a href="#">INFR-a-19</a>	Existing	Los Altos Public Works / Cal Water / City of Palo Alto	
<a href="#">INFR-a-20</a>	Existing Underfunded	Los Altos Public Works	
<a href="#">INFR-a-21</a>	Existing	In place at Los Altos PD and Municipal Service Center 707 Fremont Ave. Los Altos / EOC backup	
<a href="#">INFR-a-22</a>	NYC/blank		
<a href="#">INFR-b-1</a>	Existing Underfunded	City of Los Altos does not have City Transportation System	
<a href="#">INFR-b-2</a>	Existing		
<a href="#">INFR-b-3</a>	Existing Underfunded		
<a href="#">INFR-b-4</a>	Existing Underfunded	Cal Water Retrofit water tanks.	
<a href="#">INFR-b-5</a>	Existing Underfunded		
<a href="#">INFR-b-6</a>	Existing Underfunded	Not applicable in Los Altos	
<a href="#">INFR-b-7</a>	Existing	Standard Operating procedures	
<a href="#">INFR-b-8</a>	Existing	Standard Operating procedures	
<a href="#">INFR-b-9</a>	Existing		The city is in agreement but does not have a lead in this project
<a href="#">INFR-b-10</a>	NYC/blank		
<a href="#">INFR-c-1</a>	Existing Underfunded	SANTA CLARA COUNTY FIRE / CAL WATER	



Mitigation Strategies Identified for Los Altos

<a href="#">INFR-c-2</a>	Existing Underfunded	SANTA CLARA COUNTY FIRE / LOS ALTOS PUBLIC WORKS	
<a href="#">INFR-c-3</a>	Existing		
<a href="#">INFR-c-4</a>	Existing	No new development in wild fire areas within city.	
<a href="#">INFR-c-5</a>	Existing	Santa Clara County Fire Department	Minimal Open Space in City
<a href="#">INFR-c-6</a>	Existing	Santa Clara County Fire Department	
<a href="#">INFR-c-7</a>	Existing Underfunded	Santa Clara County Fire Department Public Works	
<a href="#">INFR-c-8</a>	NYC/blank		
<a href="#">INFR-d-1</a>	Existing Underfunded	Santa Clara Valley Water District	
<a href="#">INFR-d-2</a>	Existing Underfunded	Cal Water / Santa Clara Valley Water District	
<a href="#">INFR-d-3</a>	Existing	Los Altos Public Works	
<a href="#">INFR-d-4</a>	Existing Underfunded	Santa Clara Valley Water / District	
<a href="#">INFR-d-5</a>	Existing Underfunded	Los Altos Public Works	
<a href="#">INFR-d-6</a>	Existing Underfunded	Santa Clara Valley Water / Cal Water LOS ALTOS PUBLIC WORKS	
<a href="#">INFR-d-7</a>	Existing	Santa Clara Valley Water / Cal Water	
<a href="#">INFR-d-8</a>	Existing Underfunded	Cal Water / Santa Clara Valley Water District / MSC	
<a href="#">INFR-d-9</a>	Existing Underfunded		City does not maintain a reservoir
<a href="#">INFR-d-10</a>	Existing		N/A
<a href="#">INFR-d-11</a>	Existing Underfunded		
<a href="#">INFR-d-12</a>	Existing	Planning Dept.	
<a href="#">INFR-d-13</a>	n/a	City does not maintain waste water treatment facility	
<a href="#">INFR-d-14</a>	Existing Underfunded	Public Works / Cal Water / Santa Clara Valley Water	
<a href="#">INFR-d-15</a>	Existing	Public Works / Cal Water / Santa Clara Valley Water	
<a href="#">INFR-d-16</a>	Existing Underfunded	Cal Water / Santa Clara Valley Water District / MSC	
<a href="#">INFR-d-17</a>	n/a	Santa Clara Valley Water District	
<a href="#">INFR-d-18</a>	NYC/blank		
<a href="#">INFR-e-1</a>	Existing	City of Los Altos Planning Dept.	
<a href="#">INFR-e-2</a>	NYC/blank		
<a href="#">INFR-f-1</a>	NYC/blank		
<a href="#">INFR-g-1</a>	Existing		
<a href="#">INFR-g-2</a>	Existing	City of Los Altos / Planning / Building	
<a href="#">INFR-g-3</a>	Existing	City of Los Altos Public Works / ABAG Site	
<a href="#">INFR-g-4</a>	Existing	City of Los Altos Police Department / Los Altos IT Department. Currently on city website.	

## Mitigation Strategies Identified for Los Altos

<a href="#">INFR-g-5</a>	n/a	CITY NO LONGER MAINTAINS CERT PROGRAM / CITIZEN CORPS PROGRAM	
<a href="#">INFR-g-6</a>	Existing	City of Los Altos Police Department / Los Altos IT Department. Currently on city website.	
<a href="#">INFR-g-7</a>	NYC/blank		
<a href="#">LAND-a-1</a>	Existing	Building Division / Planning Division	
<a href="#">LAND-a-2</a>	Existing	Community Development	General Plan
<a href="#">LAND-a-3</a>	n/a		
<a href="#">LAND-a-4</a>	Under Study		
<a href="#">LAND-a-5</a>	Under Study		
<a href="#">LAND-a-6</a>	Existing	Community Development	
<a href="#">LAND-a-7</a>	Existing	Community Development Dept	
<a href="#">LAND-a-8</a>	Existing		
<a href="#">LAND-b-1</a>	Existing	Community Development / Santa Clara County Fire Department	
<a href="#">LAND-b-2</a>	Existing	Santa Clara County Fire Department	
<a href="#">LAND-c-1</a>	Existing	Community Development Department	LAMC 12.60 General Plan
<a href="#">LAND-c-2</a>	Existing	Los Altos Public Works Santa Clara Valley Water Dist	LAMC 12.60 General Plan
<a href="#">LAND-c-3</a>	Existing	Los Altos Public Works / Community Development Dept	Santa Clara Valley Water
<a href="#">LAND-c-4</a>	Existing	Community Development Department	12.60 LAMC
<a href="#">LAND-c-5</a>	Very High	Community Development Department	Santa Clara Valley Water
<a href="#">LAND-c-6</a>	Very High		Not taking lead
<a href="#">LAND-d-1</a>	Existing	Community Development Department	General Plan
<a href="#">LAND-d-2</a>	Existing	Community Development Department	General Plan
<a href="#">LAND-d-3</a>	Existing	Community Development Department	General Plan
<a href="#">LAND-d-4</a>	Existing	Community Development Department	General Plan
<a href="#">LAND-d-5</a>	Existing	Community Development Department	General Plan
<a href="#">LAND-e-1</a>	Existing	Community Development Department	General Plan
<a href="#">LAND-e-2</a>	Existing	Community Development Department	General Plan
<a href="#">LAND-f-1</a>	Existing	City Administration	General Plan
<a href="#">LAND-f-2</a>	Existing Underfunded	Community Development Department	
<a href="#">LAND-f-3</a>	Existing Underfunded	Community Development Department	
<a href="#">LAND-f-4</a>	n/a		
<a href="#">LAND-f-5</a>	n/a		
<a href="#">LAND-g-1</a>	n/a		

Source: Association of Bay Area Governments, 2009.

### 13.7.3 Los Altos Attachment 3: Los Altos Exposure Analysis

This list includes all information on Los Altos' critical facilities and identifies which of the City's critical facilities are located in the mapped hazard areas. It should be noted that the critical facilities used in Section 13.4.2.2 have been updated since ABAG's conducted exposure analysis. There may be some discrepancies with the identified critical facilities in that section and those in Los Altos Attachment 3: Exposure Analysis.

ID	Critical Facility	Address	Type	Occupancy	Own/Lease	Structure Type
33	restrooms	707 fremont avenue		N/A	own	Light wood-frame building less <= to 5,000 SQFT
34	restrooms	707 fremont avenue		N/A	own	Light wood-frame building less <= to 5,000 SQFT
35	portable sch-oak	1501 oak avenue		45	own	MH
36	city hall	1 n. san antonio rd		30	own	S 1/2
37	library	1 n san antonio road		20	own	Reinforced masonry with flexible floor and roof
1	Woodland Library	1975 Grant Road		N/A	N/A	N/A
2	restroom	portland & miramonte		N/A	own	Light wood-frame building less <= to 5,000 SQFT
3	classroom	1575 holt avenue		N/A	own	Light wood-frame building less <= to 5,000 SQFT
4	multi-purp@grnt pk	1575 holt avenue		N/A	own	Light wood-frame building less <= to 5,000 SQFT
5	restroom/park	fremont avenue & grant		N/A	own	Light wood-frame building less <= to 5,000 SQFT
6	shop & shed	707 fremont avenue		2	own	S3
7	garage	707 fremont avenue		1	own	Reinforced masonry with flexible floor and roof
8	corp yard	707 fremont avenue		N/A	own	Light wood-frame building less <= to 5,000 SQFT
9	office/storage	707 fremont avenue		15	own	Light wood-frame building less <= to 5,000 SQFT
10	bike bridge	fremont av & permanente crk		N/A	own	Bridge
11	police dept	1 n. san antonio rd		46	own	Wood-frame building > 5,000 SQFT
12	youth center	1 n. san antonio rd		3	own	Wood-frame building > 5,000 SQFT
13	history house	51 s san antonio road		N/A	own	Light wood-frame building less <= to 5,000 SQFT
14	hillview hall cc	97 hillview ave		N/A	own	Light wood-frame building less <= to 5,000 SQFT
15	multi-purpose	97 hillview ave		N/A	own	Light wood-frame building less <= to 5,000 SQFT
16	administ bldg	97 hillview ave		12	own	Light wood-frame building less <= to 5,000 SQFT
17	seniOr citizen	97 hillview ave		20	own	Light wood-frame building less <= to 5,000 SQFT
18	classrooms 16-18	97 hillview ave		N/A	own	Light wood-frame building less <= to 5,000 SQFT
19	hillview home	183 hillview		5	own	Light wood-frame building less <= to 5,000 SQFT
20	stg garage	1 n. san antonio rd		N/A	own	Light wood-frame building less <= to 5,000 SQFT
21	san antonio club	647 s. san antonio		20	own	Light wood-frame building less <= to 5,000 SQFT
22	museum	1 n. san antonio rd		5	own	Wood-frame building > 5,000 SQFT
23	theatre - lact	97 hillview ave		N/A	own	S3
24	hal brady	97 hillview ave		N/A	own	Light wood-frame building less <= to 5,000 SQFT
25	children center	97 hillview ave		45	own	Light wood-frame building less <= to 5,000 SQFT
26	classrooms 7,8,9	97 hillview ave		N/A	own	Light wood-frame building less <= to 5,000 SQFT
27	classrooms 13-15	97 hillview ave		N/A	own	Light wood-frame building less <= to 5,000 SQFT
28	bike bridge	hetch hetchy & adobe creek		N/A	N/A	Bridge
29	garden bldg.	400 university ave		2	own	Light wood-frame building less <= to 5,000 SQFT
30	shoop prk wc	400 university ave		N/A	own	Light wood-frame building less <= to 5,000 SQFT
31	nature center	482 university ave		5	own	Light wood-frame building less <= to 5,000 SQFT
32	residence	482 university ave		4	own	Light wood-frame building less <= to 5,000 SQFT
ID	Critical Facility	Structure Information	Irregularities-Plan View	Irregularities Vertical	Structural Assessment	Retrofit
33	restrooms	N/A	regular	hgh windows	N/A	N/A
34	restrooms	N/A	half octagon	N/A	N/A	N/A
35	portable sch-oak	N/A	regular	braced	N/A	N/A
36	city hall	N/A	many lg openings	also wd	N/A	Additn in 85 include evaluation
37	library	N/A	L shaped	N/A	N/A	Additn in 85 include renov+evaluati
1	Woodland Library	N/A	N/A	N/A	N/A	N/A

ID	Critical Facility	Structure Information	Irregularities-Plan View	Irregularities Vertical	Structural Assessment	Retrofit
2	restroom	N/A	slight T	N/A	N/A	N/A
3	classroom	N/A	regular	hgh windows	N/A	N/A
4	multi-purp@grnt pk	Was part of Grant Park School	high windows	N/A	N/A	N/A
5	restroom/park	N/A	slight T	N/A	N/A	N/A
6	shop & shed	N/A	regular	large openings	N/A	N/A
7	garage	N/A	wide T	lg openings, addition	N/A	N/A
8	corp yard	N/A	long rectangle	large openings	N/A	N/A
9	office/storage	N/A	regular	N/A	N/A	N/A
10	bike bridge	N/A	bike bridge	N/A	N/A	N/A
11	police dept	N/A	complex L	also wd	N/A	N/A
12	youth center	N/A	complex L	also wd	N/A	N/A
13	history house	N/A	farm house	bolts, crip.wall, plywd	N/A	N/A
14	hillview hall cc	Was school	slight L	N/A	N/A	N/A
15	multi-purpose	N/A	regular	hgh windows	N/A	N/A
16	administ bldg	N/A	regular	large openings	N/A	N/A
17	seni0r citizen	N/A	regular	hgh windows	N/A	N/A
18	classrooms 16-18	N/A	regular	hgh windows	N/A	N/A
19	hillview home	N/A	part 2 story	with porch	N/A	N/A
20	stg garage	N/A	lg openings	needs bolts	N/A	nonflam strge
21	san antonio club	N/A	L shaped	bolts, plywd	N/A	N/A
22	museum	N/A	no data	N/A	N/A	N/A
23	theatre - lact	N/A	large openings	N/A	N/A	N/A
24	hal brady	N/A	regular	large openings	N/A	N/A
25	children center	N/A	regular	large openings	N/A	N/A
26	classrooms 7,8,9	N/A	regular	hgh windows	N/A	N/A
27	classrooms 13-15	N/A	regular	hgh windows	N/A	N/A
28	bike bridge	N/A	N/A	N/A	N/A	N/A
29	garden bldg.	Bolts ok and no cripple wall	above grnd basemt	N/A	N/A	N/A
30	shoop prk wc	N/A	regular	N/A	N/A	N/A
31	nature center	N/A	complex U	tile roof	N/A	N/A
32	residence	N/A	L shaped	cripple wall	N/A	N/A
ID	Critical Facility	Anchored Equipment	Alternate Power	Sprinklers	Roof Material	Year Built
33	restrooms	no	no	no	Wood Shake	N/A
34	restrooms	no	no	no	Wood Shake	N/A
35	portable sch-oak	no	no	no	asphalt	N/A
36	city hall	no	yes	yes	Wood Shake	N/A
37	library	no	no	yes	Wood Shake	N/A
1	Woodland Library	N/A	N/A	N/A	N/A	N/A
2	restroom	no	no	no	Wood Shake	N/A
3	classroom	no	no	no	asphalt	N/A
4	multi-purp@grnt pk	no	no	no	asphalt	N/A
5	restroom/park	no	no	no	tar	N/A
6	shop & shed	no	no	yes	metal	N/A
7	garage	no	no	no	Wood Shake	N/A
8	corp yard	no	no	no	N/A	N/A
9	office/storage	no	no	no	Wood Shake	N/A

ID	Critical Facility	Anchored Equipment	Alternate Power	Sprinklers	Roof Material	Year Built
10	bike bridge	no	no	no	N/A	N/A
11	police dept	no	yes	yes	Wood Shake	N/A
12	youth center	no	no	no	Wood Shake	N/A
13	history house	no	no	no	Wood Shake	N/A
14	hillview hall cc	no	no	no	asphalt	N/A
15	multi-purpose	no	no	no	asphalt	N/A
16	administ bldg	no	yes	no	asphalt	N/A
17	seni0r citizen	no	no	no	asphalt	N/A
18	classrooms 16-18	no	no	no	asphalt	N/A
19	hillview home	no	no	no	Wood Shake	N/A
20	stg garage	no	no	no	Wood Shake	N/A
21	san antonio club	no	no	yes	Wood Shake	N/A
22	museum	no	no	yes	Wood Shake	N/A
23	theatre - lact	no	no	no	asphalt	N/A
24	hal brady	no	no	no	asphalt	N/A
25	children center	no	no	no	asphalt	N/A
26	classrooms 7,8,9	no	no	no	asphalt	N/A
27	classrooms 13-15	no	no	no	asphalt	N/A
28	bike bridge	N/A	N/A	N/A	N/A	N/A
29	garden bldg.	no	no	yes	Wood Shake	N/A
30	shoop prk wc	no	no	no	N/A	N/A
31	nature center	no	no	no	tile	N/A
32	residence	no	no	no	Wood Shake	N/A

Contents Insured					
ID	Critical Facility	Stories	Capacity	Bldg Insured Value	Value
33	restrooms	1	160	36946	0
34	restrooms	1	132	29344	0
35	portable sch-oak	1	1000	97638	0
36	city hall	1	10260	1258765	525358
37	library	1	28420	2484542	0
1	Woodland Library	N/A	N/A	N/A	N/A
2	restroom	1	341	34409	0
3	classroom	1	4806	536071	0
4	multi-purp@grnt pk	1	0	625758	0
5	restroom/park	1	376	40922	0
6	shop & shed	1	10200	466832	0
7	garage	1	3234	262671	0
8	corp yard	1	1600	74754	0
9	office/storage	1	6000	599545	0
10	bike bridge	0	0	67000	0
11	police dept	1	9935	1639488	949619
12	youth center	1	5940	491954	12246
13	history house	2	2247	178530	29870
14	hillview hall cc	1	4334	502527	191610
15	multi-purpose	1	3709	349051	0
16	administ bldg	1	1173	138231	0
17	seni0r citizen	1	3200	330527	0

ID	Critical Facility	Stories	Capacity	Bldg Insured Value	Contents Insured Value
18	classrooms 16-18	1	3424	345555	0
19	hillview home	1	1132	162062	0
20	stg garage	1	1357	80065	0
21	san antonio club	1	1668	151809	4064
22	museum	1	28420	2484542	0
23	theatre - lact	1	3920	255966	0
24	hal brady	1	3072	347941	0
25	children center	1	3424	359227	0
26	classrooms 7,8,9	1	3649	351546	0
27	classrooms 13-15	1	3200	334479	0
28	bike bridge	0	0	0	0
29	garden bldg.	1	5692	752430	0
30	shoop prk wc	1	312	52090	0
31	nature center	1	3077	387677	0
32	residence	1	1082	129760	0

**Wildland-Urban Interface (WUI)**

ID	Critical Facility	# of Dams	Fire Threat	Wildfire Threat	FEMA Flood Zone	Tsunami
33	restrooms	0	Fire-Threatened Area	Moderate	Outside Floodplain	Not Affected
34	restrooms	0	Fire-Threatened Area	Moderate	Outside Floodplain	Not Affected
35	portable sch-oak	0	Fire-Threatened Area	Moderate	500 Year Flood	Not Affected
36	city hall	0	Outside WUI hazard area	Moderate	100 Year Flood	Not Affected
37	library	0	Outside WUI hazard area	Moderate	100 Year Flood	Not Affected
1	Woodland Library	N/A	N/A	N/A	N/A	N/A
2	restroom	0	Outside WUI hazard area	Moderate	100 Year Flood	Not Affected
3	classroom	0	Fire-Threatened Area	Moderate	500 Year Flood	Not Affected
4	multi-purp@grnt pk	0	Fire-Threatened Area	Moderate	500 Year Flood	Not Affected
5	restroom/park	0	Outside WUI hazard area	Moderate	500 Year Flood	Not Affected
6	shop & shed	0	Fire-Threatened Area	Moderate	500 Year Flood	Not Affected
7	garage	0	Fire-Threatened Area	Moderate	500 Year Flood	Not Affected
8	corp yard	0	Fire-Threatened Area	Moderate	500 Year Flood	Not Affected
9	office/storage	0	Fire-Threatened Area	Moderate	500 Year Flood	Not Affected
10	bike bridge	0	Fire-Threatened Area	Moderate	500 Year Flood	Not Affected
11	police dept	0	Outside WUI hazard area	Moderate	500 Year Flood	Not Affected
12	youth center	0	Outside WUI hazard area	Moderate	500 Year Flood	Not Affected
13	history house	0	Outside WUI hazard area	Moderate	500 Year Flood	Not Affected
14	hillview hall cc	0	Outside WUI hazard area	Moderate	500 Year Flood	Not Affected
15	multi-purpose	0	Outside WUI hazard area	Moderate	500 Year Flood	Not Affected
16	administ bldg	0	Outside WUI hazard area	Moderate	500 Year Flood	Not Affected
17	seni0r citizen	0	Outside WUI hazard area	Moderate	500 Year Flood	Not Affected
18	classrooms 16-18	0	Outside WUI hazard area	Moderate	500 Year Flood	Not Affected
19	hillview home	0	Outside WUI hazard area	Moderate	500 Year Flood	Not Affected
20	stg garage	0	Outside WUI hazard area	Moderate	500 Year Flood	Not Affected
21	san antonio club	0	Outside WUI hazard area	Moderate	500 Year Flood	Not Affected
22	museum	0	Outside WUI hazard area	Moderate	500 Year Flood	Not Affected
23	theatre - lact	0	Outside WUI hazard area	Moderate	500 Year Flood	Not Affected
24	hal brady	0	Outside WUI hazard area	Moderate	500 Year Flood	Not Affected

Wildland-Urban Interface (WUI)						
ID	Critical Facility	# of Dams	Fire Threat	Wildfire Threat	FEMA Flood Zone	Tsunami
25	children center	0	Outside WUI hazard area	Moderate	500 Year Flood	Not Affected
26	classrooms 7,8,9	0	Outside WUI hazard area	Moderate	500 Year Flood	Not Affected
27	classrooms 13-15	0	Outside WUI hazard area	Moderate	500 Year Flood	Not Affected
28	bike bridge	0	Fire-Threatened Area	Moderate	100 Year Flood	Not Affected
29	garden bldg.	0	Fire-Threatened Area	Moderate	500 Year Flood	Not Affected
30	shoop prk wc	0	Fire-Threatened Area	Moderate	500 Year Flood	Not Affected
31	nature center	0	Fire-Threatened Area	Moderate	500 Year Flood	Not Affected
32	residence	0	Fire-Threatened Area	Moderate	500 Year Flood	Not Affected
Liquefaction						
ID	Critical Facility	Existing Landslide Areas	EQ-Induced Landslide	EQ Shake Potential	Susceptibility	EQ-Induced Liquefaction
33	restrooms	Few Landslides	Mapping Planned	75	Very Low	Mapping Planned
34	restrooms	Few Landslides	Mapping Planned	75	Very Low	Mapping Planned
35	portable sch-oak	Surficial Deposits	Outside of CGS Landslide Zone	55	Moderate	Outside of CGS Liquefaction Zone
36	city hall	Surficial Deposits	Mapping in Progress	85	Moderate	Mapping in Progress
37	library	Surficial Deposits	Mapping in Progress	85	Moderate	Mapping in Progress
1	Woodland Library	N/A	N/A	N/A	N/A	N/A
2	restroom	Surficial Deposits	Outside of CGS Landslide Zone	65	Moderate	Outside of CGS Liquefaction Zone
3	classroom	Surficial Deposits	Outside of CGS Landslide Zone	65	Moderate	Outside of CGS Liquefaction Zone
4	multi-purp@grnt pk	Surficial Deposits	Outside of CGS Landslide Zone	65	Moderate	Outside of CGS Liquefaction Zone
5	restroom/park	Surficial Deposits	Outside of CGS Landslide Zone	65	Low	Outside of CGS Liquefaction Zone
6	shop & shed	Surficial Deposits	Outside of CGS Landslide Zone	65	Low	Outside of CGS Liquefaction Zone
7	garage	Surficial Deposits	Outside of CGS Landslide Zone	65	Low	Outside of CGS Liquefaction Zone
8	corp yard	Surficial Deposits	Outside of CGS Landslide Zone	65	Low	Outside of CGS Liquefaction Zone
9	office/storage	Surficial Deposits	Outside of CGS Landslide Zone	65	Low	Outside of CGS Liquefaction Zone
10	bike bridge	Surficial Deposits	Outside of CGS Landslide Zone	65	Low	Outside of CGS Liquefaction Zone
11	police dept	Surficial Deposits	Outside of CGS Landslide Zone	65	Low	Outside of CGS Liquefaction Zone
12	youth center	Surficial Deposits	Outside of CGS Landslide Zone	65	Low	Outside of CGS Liquefaction Zone
13	history house	Surficial Deposits	Outside of CGS Landslide Zone	65	Low	Outside of CGS Liquefaction Zone
14	hillview hall cc	Surficial Deposits	Outside of CGS Landslide Zone	65	Low	Outside of CGS Liquefaction Zone
15	multi-purpose	Surficial Deposits	Outside of CGS Landslide Zone	65	Low	Outside of CGS Liquefaction Zone
16	administ bldg	Surficial Deposits	Outside of CGS Landslide Zone	65	Low	Outside of CGS Liquefaction Zone
17	seni0r citizen	Surficial Deposits	Outside of CGS Landslide Zone	65	Low	Outside of CGS Liquefaction Zone
18	classrooms 16-18	Surficial Deposits	Outside of CGS Landslide Zone	65	Low	Outside of CGS Liquefaction Zone
19	hillview home	Surficial Deposits	Outside of CGS Landslide Zone	65	Low	Outside of CGS Liquefaction Zone
20	stg garage	Surficial Deposits	Outside of CGS Landslide Zone	65	Low	Outside of CGS Liquefaction Zone
21	san antonio club	Surficial Deposits	Outside of CGS Landslide Zone	65	Low	Outside of CGS Liquefaction Zone
22	museum	Surficial Deposits	Outside of CGS Landslide Zone	65	Low	Outside of CGS Liquefaction Zone
23	theatre - lact	Surficial Deposits	Outside of CGS Landslide Zone	65	Low	Outside of CGS Liquefaction Zone
24	hal brady	Surficial Deposits	Outside of CGS Landslide Zone	65	Low	Outside of CGS Liquefaction Zone
25	children center	Surficial Deposits	Outside of CGS Landslide Zone	65	Low	Outside of CGS Liquefaction Zone
26	classrooms 7,8,9	Surficial Deposits	Outside of CGS Landslide Zone	65	Low	Outside of CGS Liquefaction Zone
27	classrooms 13-15	Surficial Deposits	Outside of CGS Landslide Zone	65	Low	Outside of CGS Liquefaction Zone
28	bike bridge	Surficial Deposits	Outside of CGS Landslide Zone	65	Very High	Liquefaction Hazard Zone
29	garden bldg.	Surficial Deposits	Outside of CGS Landslide Zone	75	Low	Outside of CGS Liquefaction Zone
30	shoop prk wc	Surficial Deposits	Outside of CGS Landslide Zone	75	Low	Outside of CGS Liquefaction Zone
31	nature center	Surficial Deposits	Outside of CGS Landslide Zone	75	Low	Outside of CGS Liquefaction Zone



ID	Critical Facility	Sea Level Risk 16"	Sea Level Rise 55"			
32	residence	Surficial Deposits	Outside of CGS Landslide Zone	75	Low	Outside of CGS Liquefaction Zone
33	restrooms	Not Affected	Not Affected			
34	restrooms	Not Affected	Not Affected			
35	portable sch-oak	Not Affected	Not Affected			
ID	Critical Facility	Sea Level Risk 16"	Sea Level Rise 55"			
36	city hall	Not Affected	Not Affected			
37	library	Not Affected	Not Affected			
1	Woodland Library	N/A	N/A			
2	restroom	Not Affected	Not Affected			
3	classroom	Not Affected	Not Affected			
4	multi-purp@grnt pk	Not Affected	Not Affected			
5	restroom/park	Not Affected	Not Affected			
6	shop & shed	Not Affected	Not Affected			
7	garage	Not Affected	Not Affected			
8	corp yard	Not Affected	Not Affected			
9	office/storage	Not Affected	Not Affected			
10	bike bridge	Not Affected	Not Affected			
11	police dept	Not Affected	Not Affected			
12	youth center	Not Affected	Not Affected			
13	history house	Not Affected	Not Affected			
14	hillview hall cc	Not Affected	Not Affected			
15	multi-purpose	Not Affected	Not Affected			
16	administ bldg	Not Affected	Not Affected			
17	seni0r citizen	Not Affected	Not Affected			
18	classrooms 16-18	Not Affected	Not Affected			
19	hillview home	Not Affected	Not Affected			
20	stg garage	Not Affected	Not Affected			
21	san antonio club	Not Affected	Not Affected			
22	museum	Not Affected	Not Affected			
23	theatre - lact	Not Affected	Not Affected			
24	hal brady	Not Affected	Not Affected			
25	children center	Not Affected	Not Affected			
26	classrooms 7,8,9	Not Affected	Not Affected			
27	classrooms 13-15	Not Affected	Not Affected			
28	bike bridge	Not Affected	Not Affected			
29	garden bldg.	Not Affected	Not Affected			
30	shoop prk wc	Not Affected	Not Affected			
31	nature center	Not Affected	Not Affected			
32	residence	Not Affected	Not Affected			